

"Drone Surveying and Mapping (2D and 3D): Advanced and Modern Land Surveying Using UAV-Based Technology, Enhancing Accuracy, Efficiency, and Precision in Geospatial Mapping Applications. A Transformative and Integrated (Photogrammetry & GIS) Approach for Digital Land Measurement and High-Precision Mapping"

Mr. Devidas Vanve¹, Mr. Yogesh Shivarkar², Mr. Roshan Paliwal³

¹(Head of Department, Civil Engineering (Diploma), Alamuri Ratnamala Institute of Engineering and Technology, Shahapur, Thane, India.)

^{2,3}(Ph.D Research Scholar, Department of General Engineering (Mechanical Engineering), ICT Mumbai)

Abstract : The rapid advancement of Unmanned Aerial Vehicle (UAV)-based technologies has revolutionized the field of land surveying and geospatial mapping by offering a transformative, efficient, and high-precision alternative to conventional surveying methods. Traditional techniques, although reliable, are often labour-intensive, time-consuming, and limited in accessibility, particularly in complex or hazardous terrains. This research paper presents an integrated and advanced approach to drone surveying and mapping (2D and 3D), combining photogrammetry and Geographic Information Systems (GIS) to enhance accuracy, efficiency, and precision in digital land measurement and geospatial applications.

The study introduces a comprehensive framework for UAV-based surveying that incorporates mission planning, data acquisition, processing, and analysis. By utilizing advanced airborne sensors such as high-resolution cameras and LiDAR systems, UAVs are capable of generating point clouds, geotagged images, DEMs, and Digital Feature Models (DFMs) with centimetre-level accuracy. The integration of photogrammetric data with LiDAR enhances mapping performance across diverse terrain conditions, where photogrammetry effectively captures textured surfaces while LiDAR penetrates vegetation and complex landscapes. This data fusion approach significantly improves terrain representation and reliability for topographic mapping and spatial analysis.

The research also evaluates the quality and accuracy of UAV-derived geospatial products by examining factors such as ground control point (GCP) configurations, sensor limitations, and flight parameters. The incorporation of ground checkpoints ensures the validation and refinement of outputs such as DEMs and orthophotos. Furthermore, the study emphasizes the role of advanced computational techniques, including super-resolution reconstruction and hybrid data integration methods, to enhance the resolution and quality of spatial datasets. In addition to technical advancements, the paper explores optimization techniques in UAV mission planning, including path planning, environmental modelling, and operational efficiency. Various approaches such as classical, soft-computing, and hybrid methods are discussed to improve UAV performance in terms of coverage, accuracy, and resource utilization. The study also focuses on the growing applications of drones in civil domains such as infrastructure monitoring, urban planning, environmental management, disaster assessment, agriculture, and resource mapping, particularly in developing countries like India. Despite the numerous advantages, several challenges associated with UAV deployment are addressed, including payload limitations, navigation constraints, data processing complexities, collision avoidance, energy management, and security concerns. The research outlines current trends and future directions, emphasizing the emergence of smart UAV systems, autonomous operations, and real-time data integration.

Overall, this paper establishes UAV-based surveying not merely as a supplementary tool but as a fundamental and transformative technology in modern geomatics. By integrating photogrammetry and GIS within a unified framework, the proposed approach significantly enhances data accuracy, operational efficiency, and decision-making capabilities. The study concludes that UAV-driven surveying systems pave the way for intelligent geospatial solutions, enabling the development of high-precision digital terrain models and supporting sustainable infrastructure planning, environmental monitoring, and the creation of dynamic digital twins for real-world applications.

Index Terms - Photogrammetry, GIS, Orthophoto, Orthomosaic, QGIS, GNSS, GCP, DGPS, Mission Planning, PPK, RTK, Base Station, UAVs, UAS, Geomatics, Land Surveying, DTM, LiDAR, DEM, Point Cloud.

INTRODUCTION

UAVs normally referred to as drones, are aerial platforms that operate without an onboard human pilot, relying on aerodynamic forces for lift and capable of functioning either autonomously or through remote control. Initially developed for military applications, UAVs have rapidly evolved into versatile tools across numerous civil domains due to their flexibility, cost-effectiveness, and operational safety in hazardous environments. Modern UAV systems are increasingly characterized by enhanced autonomy, intelligent navigation, and mission planning capabilities, enabling them to operate efficiently in complex and uncertain environments. Their ability to optimize flight paths based on criteria such as minimum time, reduced energy consumption, and risk avoidance has significantly improved their operational effectiveness, making them highly suitable for geospatial data acquisition and land surveying tasks.

Land surveying, one of the oldest and most fundamental engineering practices, involves determining the precise position of points on the Earth's surface, along with the measurement of distances, angles, and elevations. Traditionally, this discipline has relied on ground-based instruments such as theodolites, total stations, and GNSS receivers. While these instruments provide high accuracy at specific points, they are inherently limited by line-of-sight constraints, time-intensive fieldwork, and challenges associated with surveying large or inaccessible areas. Surveying in rugged terrains, disaster zones, or active construction and mining sites can pose significant risks to personnel and often leads to increased project costs and delays.

The emergence of geomatics—an interdisciplinary field encompassing data acquisition, modelling, analysis, and management of geospatial information—has transformed traditional surveying practices. Within this context, UAV-based surveying represents a paradigm shift by enabling rapid, high-resolution data collection over extensive areas. Equipped with advanced sensors like high-resolution cameras and LiDAR systems, UAVs can capture dense datasets in the form of images and point clouds. These datasets are processed using photogrammetric techniques to generate accurate two-dimensional (2D) maps and three-dimensional (3D) models, including DEMs and Digital Surface Models (DSMs). This capability allows surveyors to obtain comprehensive spatial information in significantly less time compared to conventional methods.

The integration of photogrammetry and Geographic Information Systems (GIS) further enhances the value of UAV-based surveying. Photogrammetry enables the extraction of precise measurements from overlapping geotagged images, while GIS facilitates the storage, analysis, and visualization of spatial data. Together, these technologies create a powerful framework for digital land measurement and high-precision mapping. UAVs can autonomously capture hundreds of overlapping images during a single flight, which are then processed into detailed 3D representations of terrain and infrastructure. This integrated approach not only improves accuracy but also supports real-time data analysis and decision-making in various applications.

Compared to traditional ground surveying and conventional aerial or satellite remote sensing, UAV-based mapping offers several advantages. UAVs can operate at lower altitudes, resulting in higher spatial resolution and improved data quality. They are particularly effective for small- to medium-scale surveys, where they provide a cost-efficient alternative without compromising accuracy. Additionally, UAVs can access difficult or hazardous locations without exposing surveyors to risk, thereby enhancing safety. The use of automated flight planning and data processing software further reduces the need for extensive training and minimizes human error, leading to improved productivity and consistency in survey outputs.

Despite these advantages, the adoption of UAV technology in land surveying presents several challenges that should be addressed to ensure reliable and accurate results. Factors such as system calibration, sensor accuracy, weather conditions, regulatory restrictions, and operator expertise can influence data quality. Achieving survey-grade accuracy often requires the use of GCPs, RTK, or PPK, GNSS techniques. Proper planning of flight missions, including altitude, overlap, and sensor configuration, is essential to optimize data acquisition. Additionally, terrain characteristics such as abrupt elevation changes and dense vegetation can impact vertical accuracy, necessitating careful consideration during survey design and execution.

The rapid advancement of UAV technology has also led to significant improvements in topographical mapping and elevation modelling. Drone-based systems can generate highly accurate DEMs with fine spatial resolution, enabling detailed analysis of terrain features. The accuracy of these models depends on factors such as the number and distribution of control points, sensor quality, and processing algorithms. Innovations in UAV hardware, including improved stabilization systems and altitude control mechanisms, have further enhanced measurement precision. These developments are particularly valuable in applications requiring high levels of accuracy, such as infrastructure inspection, deformation monitoring, and large-scale engineering projects.

In addition to technical advancements, UAV-based surveying plays a crucial role in supporting modern initiatives such as smart cities, Building Information Modelling (BIM), and digital infrastructure management. The ability to create accurate 3D models of terrain and built environments facilitates seamless integration with digital platforms, enabling efficient planning, design, and lifecycle management of infrastructure projects. Furthermore, UAVs have proven to be valuable tools in rural and remote areas, where traditional surveying methods are often impractical. Their ability to provide high-resolution data at relatively low cost makes them particularly beneficial for land-use planning, natural resource management, and community development.

Moreover, UAV technology has found widespread applications across various sectors, including construction management, geotechnical engineering, precision agriculture, environmental monitoring, and post-disaster assessment. Their capability for real-time monitoring and data acquisition allows for timely decision-making and improved project outcomes. Unlike conventional methods, UAVs can operate in irregular flight paths and challenging environments, ensuring comprehensive data collection without disturbing natural habitats or endangering human lives.

In conclusion, drone-based surveying represents a transformative advancement in the field of land surveying and geospatial mapping. By integrating photogrammetry and GIS technologies, it offers a modern, efficient, and highly accurate approach to data acquisition and analysis. While challenges related to accuracy, regulation, and operational constraints remain, ongoing technological advancements and improved methodologies continue to enhance the reliability and applicability of UAV systems. This paper explores the potential of drone surveying and mapping as a comprehensive solution for digital land measurement, highlighting its role in improving accuracy, efficiency, and precision in modern geospatial applications and its significance in shaping the future of surveying and infrastructure development.

A Short History of UAV

The term UAV gained widespread usage in the early 1990s to describe robotic or pilotless aircraft systems. Over time, several related terms have emerged based on specific applications and technological variations. These include Unmanned Air Vehicle, Unmanned Aircraft Vehicle, Unmanned Aerospace Vehicle, Uninhabited Aircraft Vehicle. The U.S. Federal Aviation Administration (FAA) broadly defines a UAV as any aircraft operated without a human pilot on board, regardless of its size or purpose. The origins of unmanned flight date back to 1783, when the Montgolfier brothers in France demonstrated the first balloon flight, laying the conceptual foundation for aerial systems without on-board human control. Later, in 1896, a significant milestone was achieved with the flight of a steam-powered unmanned aircraft along the Potomac River, marking one of the earliest uses of UAVs for aerial imaging and surveillance. During World War I, the development of the *Kettering Bug* in 1918 represented one of the first attempts at a pilotless, guided aerial weapon. This was followed by the *Queen Bee* in the 1930s, a radio-controlled aircraft that contributed to the evolution of remotely operated UAV systems. These early innovations laid the groundwork for more sophisticated unmanned technologies. Between 1980 and 2000, advancements in military reconnaissance and surveillance significantly accelerated UAV development. During this period, modern remotely piloted aircraft systems were designed with improved navigation, control, and imaging capabilities, primarily for defence applications. Since the early 21st century, particularly after 2003, UAVs have rapidly expanded into civilian and commercial domains. They are now widely used in industries such as search and rescue, logistics and delivery, filmmaking, construction, and real estate. One notable development is the Amazon Prime Air initiative, launched in 2013, which aimed to revolutionize last-mile delivery using autonomous drones. Although initial implementation faced challenges such as regulatory constraints, infrastructure requirements, and airspace management, recent advancements in sense-and-avoid technologies have enabled safer drone operations. As a result, Amazon initiated UAV-based delivery services in Lockeford, California, in 2022. In recent years, UAV technology has continued to evolve, enabling a broad range of civil applications. In agriculture, drones fitted with multispectral sensors are used for crop monitoring and precision farming. In disaster management and search-and-rescue operations, UAVs provide rapid access to hazardous or hard-to-reach areas, significantly improving response time and operational safety. Overall, the evolution of UAVs from experimental aerial systems to highly sophisticated tools has transformed their role across both military and civilian sectors, paving the way for advanced applications in geospatial mapping, surveying, and remote sensing.

Different Types and Key Elements of UAVs

Unmanned Aerial Vehicles (UAVs) are designed in a variety of shapes and configurations, each tailored to specific mission requirements. The selection of UAV type depends largely on factors such as flight objectives, payload capacity, endurance, and the type of onboard sensors or equipment. Among the various UAV configurations, multi-rotor drones are the most widely used for applications such as aerial photography, video surveillance, and land surveying due to their stability and manoeuvrability. Multi-rotor UAVs are further classified based on the number of propellers they employ. These include bi-copters (2 propellers), tri-copters (3 propellers), quadcopters (4 propellers), pentacopters (5 propellers), hexacopters (6 propellers), and octocopters (8 propellers). Among these, quadcopters are the most commonly used due to their balance between efficiency, cost, and operational simplicity. Another major category is fixed-wing UAVs, which resemble conventional airplanes and utilize wings instead of multiple rotors. These drones are highly energy-efficient and are suitable for long-distance surveying and mapping tasks. In contrast, single-rotor UAVs, which are similar in design to helicopters, operate using a single large rotor and a tail rotor for stability and directional control. They are more energy-efficient than multi-rotor drones but are mechanically more complex. A hybrid configuration, known as fixed-wing VTOL drones, combines the advantages of both multi-rotor and fixed-wing systems. These UAVs use rotors for VOTL, while fixed wings provide efficient forward flight and gliding capabilities, making them ideal for large-scale mapping applications.

Key Components of a Quadcopter UAV

The quadcopter represents one of the most popular UAV configurations used in surveying and mapping. Its primary components include:

Propellers: Propellers generate thrust and control the direction of the UAV. They are typically classified into standard (puller) and pusher types, depending on their orientation and function.

Flight Controller: It serves as the CPU or “brain” of the UAV. It manages flight stability by processing sensor data and controlling motor speeds accordingly.

Electronic Speed Controller (ESC): The ESC regulates the speed of the motors by adjusting the electrical power supplied, enabling precise control of UAV movement.

Motors: High-torque DC motors are used to drive the propellers and maintain stable flight. These motors adjust speed dynamically to control lift and manoeuvrability.

FPV Transmitter and Control Receiver: The transmitter sends control commands from the operator, while the receiver captures these signals and relays them to the flight controller.

GPS Module: The GPS unit provides real-time positioning data, including latitude, longitude, and altitude. It enables navigation, route tracking, and return-to-home functionality in case of signal loss.

Antenna: The antenna facilitates communication between the UAV and the ground control system by transmitting telemetry, control signals, and video data.

Battery: A rechargeable battery supplies power to all UAV components, directly influencing flight duration and performance.

Power Distribution Panel (PDP): The PDP distributes electrical power from the battery to various components and provides protection against electrical faults such as overcurrent.

Camera: Cameras, either integrated or detachable, are essential for capturing aerial imagery and video data used in surveying and mapping.

Landing Gear: Landing gear supports safe take-off and landing, particularly for larger UAVs or those carrying payloads.

Chassis (Frame): The chassis acts as the structural framework that holds all components together and ensures mechanical stability.

Working Principle of a Quadcopter

The operation of a quadcopter begins when the operator inputs commands via a controller. These commands are transmitted to the receiver, which forwards them to the flight controller. The flight controller processes this information and adjusts the speed of each motor through the electronic speed controllers. This coordinated variation in motor speed generates lift and directional movement. The propellers work collectively to control altitude, direction, and stability. Multi-propeller configurations enhance reliability; even if one propeller fails, the UAV can maintain controlled flight using the remaining propellers. Additionally, the GPS module continuously provides navigation data, enabling accurate positioning, path tracking, and safe return operations.

Classification of UAVs

UAVs can be classified based on several parameters depending on their design, performance, and application. These classifications help in selecting the appropriate UAV for specific surveying and mapping tasks.

Based on Performance Characteristics- UAVs are categorized according to parameters such as: Range, Maximum altitude, Speed, Endurance, Payload capacity, Wingspan and wing loading, Design complexity and cost. These factors determine the operational capability and suitability of UAVs for different mission profiles.

Based on Propulsion System- Fuel-powered UAVs: Suitable for long-endurance missions and heavy payloads, Electric UAVs: Widely used due to lower cost, ease of operation, and environmental sustainability.

Based on Weight Classification- Drones are also classified according to their weight: Micro, Light, Medium, Heavy, Super Heavy UAVs. This classification influences regulatory requirements, payload capacity, and application areas.

I. Overview of UAV in Mapping Areas

Emerging UAV technology has significantly transformed mapping areas across a wide range of disciplines, particularly in agriculture and geological studies. By using lightweight UAVs fitted with advanced sensors, surveyors can rapidly acquire high-resolution topographic data and generate accurate georeferenced maps. In agriculture, UAVs play a crucial role in precision farming by enabling detailed monitoring of crop health, early detection of diseases, and identification of pest infestations and nutrient deficiencies. This data-driven approach allows farmers to optimize resource usage and improve crop yield. Similarly, in geological studies, the shift from conventional airborne LiDAR systems to drone-based LiDAR platforms has enhanced the efficiency and precision of terrain analysis. UAVs facilitate the generation of highly accurate Digital Terrain Models (DTMs), which are essential for studying landscape evolution, fault lines, and geomorphological changes. These advancements not only improve data accuracy but also reduce operational costs, time requirements, and logistical factors related with traditional surveying methods. As drone technology continues to evolve, it is expected to further revolutionize mapping methodologies, establishing itself as an indispensable tool in geospatial applications.

II. Role of UAVs in Terrain Mapping (Elevation)

Advancements in UAV technology have greatly enhanced the accuracy and efficiency of elevation mapping. Drones equipped with advanced cameras, Global Navigation Satellite Systems (GNSS), and inertial measurement units (IMU) can capture precise elevation data, enabling the creation of detailed 2D and 3D topographic models. These models provide valuable insights into terrain variations and are widely used in applications like agriculture, urban planning, environmental, and infrastructure monitoring. In agriculture, for example, elevation data helps in analysing land characteristics, drainage patterns, and soil variability, thereby supporting informed decision-making for crop management. Furthermore, the integration of drone-derived data with GIS improve spatial analysis capabilities. This integration allows for more comprehensive interpretation of elevation-related parameters and supports advanced geospatial modelling.

Drones offer several advantages over traditional surveying methods, particularly in the generation of high accuracy Digital Elevation Models:

High Accuracy: Merging of technologies such as GNSS, IMU, and Post-Processed Kinematic (PPK) systems enables centimetre-level accuracy, with elevation differences as low as 1 cm in some cases.

Reduced Need for Ground Control Points (GCPs): Advanced positioning systems minimize reliance on extensive ground-based measurements.

Cost and Time Efficiency: UAVs significantly reduce survey time and operational costs compared to conventional methods.

Accessibility: Drones can operate in difficult or hazardous terrains, including mountainous regions, dense vegetation, and disaster-affected areas.

High Spatial Resolution: UAV imagery provides detailed surface information, enabling accurate mapping of vegetation, soil conditions, and surface features.

Recent advancements, such as RTK positioning, have further improved the precision and reliability of UAV-based elevation mapping. Overall, drones provide a flexible, efficient, and cost effective solution for high-resolution topographic data acquisition.

III. Techniques in UAV Based Mapping

Modern drone-based mapping relies on a combination of advanced techniques and technologies that enhance data accuracy, processing efficiency, and analytical capabilities.

One of the fundamental techniques is the use of high-resolution aerial imagery to generate orthomosaics—geometrically corrected images that provide a uniform scale representation of the surface. These orthomosaics are essential for detailed terrain analysis and mapping applications. In addition, machine learning algorithms are increasingly being integrated with drone imagery to automate the classification of land cover and habitat types. This approach improves the efficiency and accuracy of environmental monitoring and resource management. Another important advancement is the optimization of flight trajectory planning, which ensures efficient data collection while avoiding obstacles and minimizing data gaps. Such improvements contribute to higher mapping accuracy and better coverage, particularly in complex environments. The integration of LiDAR (Light Detection and Ranging) and photogrammetry represents a significant advancement in drone-based mapping. LiDAR provides highly accurate elevation data by penetrating vegetation and capturing ground surface details, while photogrammetry generates high-resolution visual imagery and texture information.

The fusion of these two datasets using advanced processing algorithms enables the creation of accurate 3D models. This integrated approach is particularly valuable in applications such as: Topographic surveying, Infrastructure planning and analysis Environmental monitoring, Urban development .By combining the strengths of both technologies, UAV-based mapping achieves superior accuracy, detail, and reliability compared to using either method independently.

Existing System

The conventional land surveying ecosystem, although reliable and widely adopted, suffers from several inherent limitations that affect efficiency, accuracy, safety, and scalability. Traditional surveying methods primarily rely on instruments such as Total Stations and GNSS rovers, which require extensive fieldwork and manual operations.

1. Labour-Intensive and Time-Consuming Process

Surveying large areas using conventional methods requires survey crews to physically access multiple locations and record measurements point by point. This process is highly time-consuming and may take several days or even weeks to complete a single project.

2. Sparse Data Collection

Traditional surveying techniques collect only a limited number of discrete data points. Such sparse datasets may fail to capture micro-terrain variations and subtle surface features, which can reduce the accuracy of terrain modelling, earthwork estimation, and engineering design.

3. Safety Risks

Field surveyors are frequently exposed to hazardous environments, including highways, unstable slopes, and construction zones with heavy machinery, and contaminated or inaccessible areas. These conditions increase operational risks and may compromise worker safety.

4. Subjectivity in Feature Identification

Feature identification and mapping—such as determining road edges, embankments, or drainage boundaries—depend largely on the surveyor's interpretation in the field. This introduces subjectivity and may lead to inconsistencies in the collected data.

5. High Cost of High-Density Surveys

Achieving high-density spatial data over extensive areas through conventional techniques is both economically and operationally expensive. Increasing point density requires additional manpower, equipment usage, and field time.

6. Data Silos and Limited Integration

Survey data generated through traditional methods often remains isolated in formats such as CAD drawings and requires manual conversion for integration with Geographic Information Systems (GIS) or Building Information Modelling (BIM) platforms. This limits interoperability and efficient data sharing among stakeholders.

Proposed System

To address the shortcomings of conventional surveying methods, this research proposes an integrated Drone-Based Geomatics Framework (DBGF). The proposed framework emphasizes automation, high-resolution data acquisition, interoperability, and digital integration for modern surveying applications.

Core Philosophy

The proposed system replaces traditional sporadic point-based measurements with comprehensive area-based aerial data capture. The objective is to generate a highly accurate digital replica of the surveyed site for efficient analysis, planning, and management.

Key Features of the Proposed System

1. Automated Mission Planning

The framework utilizes Ground Control Points (GCPs) along with pre-programmed autonomous flight paths to ensure accurate, repeatable, and efficient data collection with minimal human intervention.

2. High-Density Data Acquisition

The drone platform captures hundreds of overlapping aerial images during each flight mission. These images are processed to generate millions of high-density 3D spatial data points, enabling detailed terrain representation.

3. Multi-Sensor Fusion Capability

The proposed system supports the integration of multiple sensors, including RGB cameras, LiDAR sensors, and multispectral sensors. This flexibility allows the framework to adapt to varying project requirements and application domains.

4. Cloud-Based Processing and Centralized Data Management

Captured data is processed through automated cloud-based photogrammetric workflows to generate orthomosaics, DSMs, DTMs, and 3D point clouds. All outputs are stored within a centralized data repository accessible to project stakeholders.

5. Seamless Integration with GIS and BIM Platforms

The outputs generated by the proposed framework are directly compatible with industry-standard GIS platforms such as ArcGIS and QGIS, as well as BIM software such as Autodesk Revit. This interoperability facilitates efficient design workflows, spatial analysis, infrastructure planning, and long-term asset management.

System Architecture

The proposed **Drone-Based Geomatics Framework (DBGF)** follows a layered and modular architecture designed to ensure efficient data acquisition, processing, analysis, and integration. The architecture consists of four major layers: Hardware Layer, Data Acquisition and Control Layer, Data Processing Layer, and Analysis and Application Layer.

1. Hardware Layer

This forms the physical foundation of the DBGF and includes the aerial platform, sensors, and georeferencing components required for accurate spatial data collection.

a) UAV Platform

The framework supports both **multi-rotor UAVs** and **fixed-wing UAVs** depending on project requirements. **Multi-rotor UAVs** are suitable for low-altitude operations, confined spaces, and applications requiring high manoeuvrability and flexibility. **Fixed-wing UAVs** are preferred for surveying large and open areas due to their extended flight endurance and operational efficiency.

b) Sensors

Multiple sensors are integrated into the UAV platform to support diverse surveying applications. These include: **GNSS/IMU Systems** for accurate positioning and orientation, **RGB Cameras** for high-resolution photogrammetric mapping, **LiDAR Scanners** for precise elevation and terrain modelling, and **Multispectral/Thermal Cameras** for environmental and agricultural analysis.

c) Ground Control Points (GCPs)

GCPs are precisely surveyed reference markers placed across the study area. These points are used to improve georeferencing accuracy and validate the positional accuracy of the generated spatial models.

2. Data Acquisition and Control Layer

This layer is responsible for mission planning, flight automation, and real-time control of UAV operations.

Flight Planning Software

Specialized flight planning applications such as DJI Pilot and Pix4Dcapture are utilized to design autonomous flight missions. These applications enable users to define parameters such as: Flight altitude, Image overlap ratio, Flight speed, and Survey boundaries.

Automated flight planning ensures repeatability, consistency, and efficient coverage of the survey area.

3. Data Processing Layer

The Data Processing Layer converts raw aerial data into usable geospatial products through photogrammetric and LiDAR processing techniques. Photogrammetry and LiDAR Processing Software Processing is carried out using desktop or cloud-based software platforms such as:

Pix4Dmatic, Agisoft Metashape, and Bentley Context Capture.

This layer performs operations including: SfM, dense image matching,

Point cloud generation, Orthomosaic creation, DSM generation, and

DTM extraction. The processed outputs form the primary deliverables for further analysis and decision-making.

4. Analysis and Application Layer

The Analysis and Application Layer utilizes the generated geospatial products for engineering analysis, planning, visualization, and infrastructure management. GIS, BIM, and CAD Platforms

The processed datasets are integrated into industry-standard software platforms such as:

ArcGIS Pro, AutoCAD Civil 3D, and Autodesk Revit.

These platforms support various applications, including: Volumetric analysis, Contour generation, Terrain modelling, Infrastructure design, Asset management, and 3D visualization.

The seamless interoperability between UAV-generated datasets and GIS/BIM/CAD environments enhances the overall efficiency and accuracy of engineering workflows.

LITERATURE REVIEW

1. Technological Foundations and Accuracy: The foundation of UAV-based surveying lies in Structure-from-Motion (SfM) photogrammetry, a technique that reconstructs three-dimensional (3D) structures from overlapping two-dimensional (2D) images. Early research by Westoby et al (2012). Demonstrated that SfM enables the generation of high-density and cost-effective topographic models using standard digital imagery. This marked a significant advancement in making high-resolution mapping more accessible. Further contributions by Colomina & Molina (2014) emphasized the integration of photogrammetry with computer vision algorithms, which significantly enhanced automation, processing efficiency, and scalability of UAV-based mapping systems. This convergence has been instrumental in transitioning UAV surveying from experimental research to commercial application. Accuracy assessment has been a key focus in the literature. Harwin & Lucieer (2012) validated that UAV-derived Digital Surface Models (DSMs) can achieve centimetre-level accuracy when supported by proper ground control and processing techniques. Their findings indicate that UAV-based methods are comparable to, and in some cases competitive with, traditional ground surveying techniques for topographic mapping.

2. Comparison with Traditional and Remote Sensing Methods: A substantial body of research compares UAV surveying with conventional and alternative remote sensing technologies such as terrestrial laser scanning and manned aerial photogrammetry. According to Nex & Remondino (2014), UAVs provide an optimal balance among spatial resolution, operational flexibility, and cost-effectiveness. Terrestrial Laser Scanning (TLS) offers extremely high accuracy and detailed point clouds; however, its application is limited by range, line-of-sight constraints, and time-intensive fieldwork. On the other hand, manned aerial surveys are suitable for covering large geographic areas but involve significantly higher operational costs and typically provide lower spatial resolution compared to UAV systems. UAVs effectively bridge this gap by offering high-resolution data acquisition at relatively low cost, particularly for small to medium-scale projects ranging from approximately 10 to 500 hectares. This makes them highly suitable for engineering, construction, and environmental applications where both accuracy and efficiency are critical.

3. Sensor Evolution: Beyond RGB Imaging: Recent literature highlights a transition from traditional RGB imaging toward advanced sensor integration in UAV platforms. The incorporation of LiDAR technology, as explored by Wallace et al. (2016), has significantly enhanced the capability of UAVs in terrain mapping. Unlike photogrammetry, LiDAR can penetrate vegetation canopies, enabling the generation of accurate Digital Terrain Models (DTMs) in forested and densely vegetated areas. In addition, the use of multispectral and thermal sensors has excelled the of drone applications beyond topographic mapping. Research by Zhang & Kovacs (2012) demonstrated the effectiveness of multispectral imaging in precision agriculture, including vegetation health monitoring and crop analysis. Thermal sensors further contribute to applications such as infrastructure inspection, energy audits, and environmental monitoring by detecting temperature variations and anomalies. This evolution of sensor technologies has transformed UAVs into multi-functional platforms capable of capturing both geometric and thematic data, thereby broadening their applicability across various disciplines.

4. Identification of Research Gap and Future Directions: Despite the well-established capabilities of UAVs in high-resolution data acquisition, the literature identifies a critical gap in the integration of UAV-derived data into comprehensive geospatial and infrastructure management systems. Current challenges include efficient data processing, interoperability with GIS, and seamless integration with BIM frameworks. Researchers such as Siebert & Teizer (2014) emphasize the need for advancements in real-time data processing, automated feature extraction, and continuous updating of digital models. The concept of “digital twins,” which involves creating dynamic, real-time digital representations of physical assets, is emerging as a key area of development. This research addresses the identified gap by proposing a holistic and integrated UAV-based surveying framework that links data acquisition with advanced processing, analysis, and long-term asset management. By bridging the disconnect between raw data collection and actionable insights, the study contributes toward the development of intelligent, automated, and sustainable geospatial systems.

RESEARCH MATERIAL METHODOLOGY

This study presents a structured methodology for accurate and efficient UAV-based land surveying in modern geospatial applications. The approach begins with defining the research objective and selecting a suitable case study area based on terrain complexity and accessibility. Data acquisition involves careful UAV flight planning, including altitude, overlap ratios, and flight path design to ensure complete coverage. High-resolution sensors and GNSS-enabled systems are used for precise data collection, while Ground Control Points (GCPs) are strategically placed to enhance spatial accuracy. The collected data is processed using photogrammetric techniques to generate orthomosaics, DEMs, and 3D surface models. These outputs are further integrated with GIS for spatial analysis and visualization. This methodology ensures high accuracy, efficiency, and reliability in drone-based surveying and mapping applications.

I. PRE-FLIGHT (Mission Planning and Preparation)

This phase forms the foundation of the survey and ensures accurate and efficient data acquisition.

- 1. Project Objective Definition-** Define survey purpose (topographic mapping, land measurement, infrastructure planning, etc.). Determine required accuracy (centimeter-level or sub-meter). Identify expected outputs such as orthomosaics, DEM, DSM, contour maps, and 3D models.

2. Study Area and AOI Delineation

Define the Area of Interest (AOI) using GPS coordinates and GIS tools. Analyze terrain characteristics, vegetation, accessibility, and existing maps/satellite imagery.

3. Regulatory Compliance and Permissions

Obtain necessary approvals from aviation authorities (e.g., DGCA). Ensure adherence to UAV regulations, airspace restrictions, and safety guidelines.

4. UAV Platform and Sensor Selection

Select appropriate UAV platforms such as RTK drone based on project scale and accuracy needs.

Equip UAV with suitable sensors: RGB camera for photogrammetry, LiDAR or multispectral sensors (if required)

Key considerations:

Flight stability and manoeuvrability, High-resolution imaging capability, Autonomous waypoint navigation.

5. Ground Control Points (GCPs) Planning

Design and distribute GCPs uniformly across the study area. Survey GCPs using high-precision GNSS (RTK/DGPS/PPK). Ensure clear visibility of GCPs in aerial images.

6. Flight Planning and Mission Design

Develop automated flight paths using mission planning software (e.g., Pix4Dcapture, DJI Pilot 2).

Define flight parameters:

Altitude: Typically 50–100 m

Speed: Optimized to avoid motion blur

Image overlap: 70–80% (front and side)

GSD: Defined as per resolution requirement

Set camera parameters (ISO, shutter speed, white balance).

7. Risk Assessment and Safety Measures

Assess weather conditions (wind, rain, visibility). Identify obstacles (trees, buildings, power lines). Ensure battery readiness and backup systems.

II. DURING FLIGHT (Data Acquisition and Image Capture)

This phase involves systematic and automated collection of aerial data.

1. Pre-Takeoff Checks

Calibrate UAV sensors and navigation systems. Verify GPS connectivity and satellite availability. Confirm mission parameters and flight path.

2. UAV Deployment and Flight Execution

Launch UAV from a safe, open area while maintaining Visual Line of Sight (VLOS).

Execute pre-programmed autonomous flight for consistent coverage.

3. Image Acquisition and Data Logging

Capture high-resolution, overlapping images at regular intervals. Maintain consistent altitude and speed. Ensure proper exposure and minimal motion blur. Record geotagged images with GPS coordinates and telemetry data (altitude, orientation).

4. Real-Time Monitoring

Monitor UAV performance (battery, GPS, altitude). Ensure complete coverage of the AOI.

Adjust parameters if required.

5. GCP Verification

Confirm visibility of GCPs in captured images. Record accurate coordinates using GNSS systems.

III. POST-FLIGHT (Data Processing and Photogrammetric Analysis)

This phase transforms raw UAV data into accurate geospatial outputs using advanced photogrammetry and GIS techniques.

1. Data Transfer and Pre-Processing

Download and organize aerial images, GNSS data, and flight logs. Remove blurred or redundant images and perform necessary corrections.

2. Image Alignment (Structure-from-Motion)

Import images into photogrammetry software (Pix4D, AgisoftMetashape, Bentley ContextCapture, 3Dsurvey). Identify matching features across overlapping images.

Generate a sparse point cloud.

3. Georeferencing and GCP Integration

Input GCP coordinates into the model.

Perform bundle adjustment to improve spatial accuracy.

4. Dense Point Cloud Generation

Generate a high-density 3D point cloud with millions of georeferenced points.

Filter noise and remove outliers.

5. Surface and Terrain Modelling

Generate: Digital Surface Model (DSM), Digital Elevation Model (DEM), Extract Reduced Levels (RLs) for elevation analysis.

6. Orthomosaic, Contour, and 3D Model Generation

Produce a geometrically corrected orthomosaic map. Generate contour maps representing terrain variation. Develop textured 3D mesh models for visualization.

7. GIS Integration and Spatial Analysis

Import outputs into GIS/CAD platforms (ArcGIS, QGIS, AutoCAD Civil 3D, Trimble Business Center).

Perform:

Area and volume (cut/fill) calculations, Terrain profiling, Change detection and planning analysis

8. Accuracy Assessment and Validation

Validate results using independent checkpoints.

Compare UAV-derived coordinates with ground values.

Compute Root Mean Square Error (RMSE) to ensure required accuracy standards.

IV. DELIVERABLES AND APPLICATIONS

The final outputs are high-precision geospatial products suitable for various engineering and planning applications.

1. Mapping Outputs

Orthomosaic maps (2D), DEM, DSM, Contour maps.

2. 3D Outputs

Dense point cloud datasets, 3D textured models

3. Analytical Outputs

Area and volume calculations, Cut-and-fill analysis, Terrain and elevation profiles

4. GIS-Based Deliverables

Layered geospatial datasets, Thematic maps for decision-making

5. Applications

Land and cadastral surveying, Urban planning and smart city development, Infrastructure monitoring (roads, bridges, dams), Agriculture and precision farming, Mining and stockpile analysis, Disaster management and environmental monitoring.

6. Reporting and Documentation

Comprehensive technical report (methodology, results, accuracy), Metadata and processing workflow documentation, Visualization outputs (maps, charts, and 3D views).

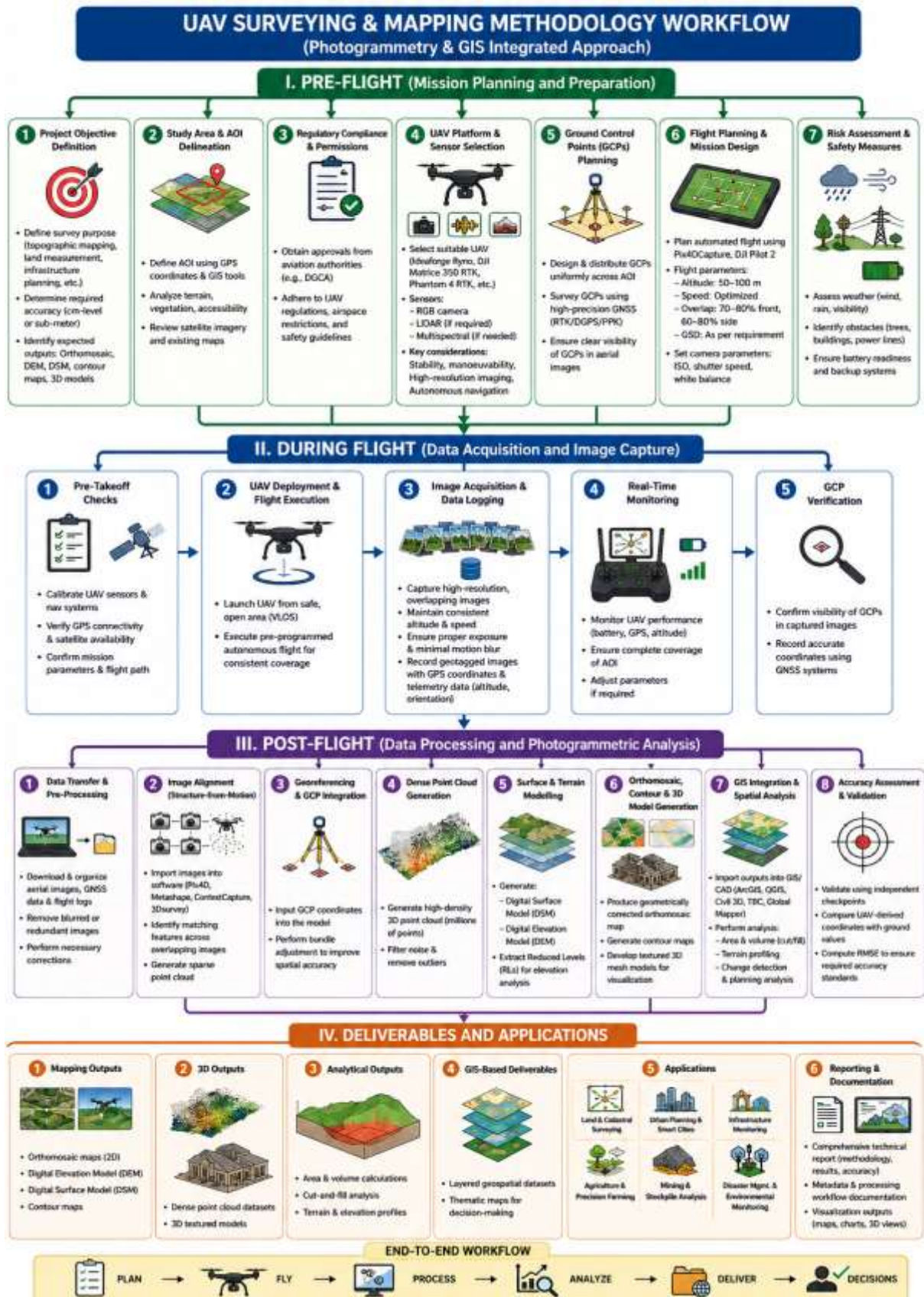


Fig.no 1: UAV Surveying & Mapping Methodology Workflow

PRACTICAL BASED METHODOLOGY (SOFTWARE APPROACH)



Fig.no 2: Drone Surveying and Mapping Phases (Software Approach)

I.Mission Planner (ArduPilot) – Flight Planning & Data Capture

Step 1: Pre-Flight Preparation

- i. **Install Mission Planner** on Windows PC/tablet
- ii. **Connect drone** via USB/telemetry radio to Mission Planner
- iii. **Calibrate sensors:** Accelerometer (6-sided calibration),Compass (full rotation),Gyro & barometer
- iv. **Check firmware:** Ensure ArduCopter 4.x+ for mapping drones
- v. **Insert SD card** and verify storage space

Step 2: Configure Flight Parameters for Mapping

- i. Open **FTW (Flight Plan)** tab → Click **MAVLINK** → Select correct port
- ii. Navigate to **Common Missions** → Select **Survey**
- iii. Set critical parameters:

Table no 1: Configure Flight Parameters for Mapping

Sr.No	Parameter	Recommended Value	Purpose
1	Altitude AGL	80–120 m	Balance resolution & coverage
2	Overlap (Front).	75–80%	ensure feature matching
3	Overlap (Side)	65–70%	ensure feature matching
4	Camera Angle	-90° (nadir)	straight down view
5	Speed	5–7 m/s	stable image capture
6	GSD Target	2–5 cm/pixel	depends on altitude

iv. Calculate Ground Sampling Distance (GSD):

$$GSD = \frac{h \cdot Sw}{F \cdot IMG_{gw}}$$

$$GSD_{width} = \frac{\text{Flight Altitude (m)} \times \text{Sensor Width (mm)} \times 100}{\text{Focal Length (mm)} \times \text{Image Width (pixels)}}$$

$$GSD_{height} = \frac{\text{Flight Altitude (m)} \times \text{Sensor Height (mm)} \times 100}{\text{Focal Length (mm)} \times \text{Image Height (pixels)}}$$

Step 3: Define Survey Area & Generate Path

- i. Click **Polygon** tool → Draw perimeter around survey area on map
- ii. Adjust **pattern type**: Grid (for rectangular areas) or Spiral (irregular)
- iii. Click **Write** → Send mission to drone
- iv. **Verify mission**: Check flight path on map for coverage gaps

Step 4: Add Ground Control Points (GCPs) – required for accuracy

- i. Mark GCP locations in the field with high-visibility targets
- ii. Survey GCP coordinates using **RTK GPS** or total station
- iii. Export GCPs as **CSV** (Latitude, Longitude, Elevation)
- iv. Save file for WebODM import later

Step 5: Execute Autonomous Flight

- i. Switch drone to **LOITER** mode → Arm motors
- ii. Switch to **AUTO** mode → Drone begins mission
- iii. Monitor live telemetry: Battery voltage/current, GPS lock (≥12 satellites), Camera trigger status, Flight path adherence
- iv. Manual override: Keep stick ready for emergency RTL (Return to Launch)

Step 6: Post-Flight Data Export

- i. Download **photo folder** from drone SD card
- ii. Verify image count matches mission plan
- iii. Export **flight log** (.tlog) for quality review
- iv. Organize folder structure: /Survey_Date_Location/Images, GCP.csv (if used), flight_log.tlog

II. WebODM (Photogrammetry) – 3D Reconstruction & Orthomosaic Generation

Step 1: Install & Launch WebODM

- i. Install Docker (required for WebODM)
- ii. Download WebODM from <https://webodm.org/>
- iii. Run WebODM (docker-compose up)
- iv. Access via browser: <http://localhost:8000>

Step 2: Create New Project

- i. Click **Add Project**
- ii. Enter name: Survey_2026_05_12_SiteA
- iii. Add description: location, date, purpose
- iv. Click **Create Project**

Step 3: Upload Drone Images

- i. Click **Add Task** within the project
- ii. Drag & drop all drone images into upload area
- iii. Image requirements: JPEG/RAW formats supported, ≥50 images for small areas (more for large sites), Consistent exposure settings

Step 4: Configure Processing Options

Click **Options** → Set key parameters:

Table no 2: Configure Processing Options

Sr.No	Option	Recommended Setting	Reason
1	Camera Lens	Auto-detect or manual	matches drone camera
2	Alignment Method	Refine	balances speed/accuracy
3	Point Cloud	Enabled	needed for 3D analysis
4	DSM/DEM	Enabled	elevation model
5	Orthophoto	Enabled (GeoTIFF)	mapped image
6	Overlap Filtering	Enabled	removes edge artifacts
7	Resolution	Full (or 0.5 for faster)	maintains GSD
8	Build PDF Report	Enabled	quality documentation

Step 5: Input GCPs

- i. Click **GCP** tab → Upload GCP.csv
- ii. Format required: X,Y,Z,MARK_TYPE,e.g.78.5432,19.2345,520.3,GT,
(Longitude, Latitude, Elevation, Ground Truth)
- iii. Click **Save** → WebODM uses GCPs for georeferencing

Step 6: Start Processing

- i. Click **Start Processing**
- ii. Processing time varies (30 min – 4 hours depending on image count & hardware)
- iii. Monitor progress via **Dashboard** (elapsed time, current stage)
- iv. **Processing stages:** Feature extraction, Sparse point cloud, Dense point cloud
Mesh generation, Orthophoto & DSM creation

Step 7: Review Results in WebODM

- i. Click **View Map** → Inspect orthophoto over Google Satellite
- ii. Enable **Show Cameras** to verify camera positions
- iii. Use **3D View** → Rotate model, check for voids/artifacts
- iv. Adjust opacity slider to compare with basemap

Step 8: Download Outputs

Click **Download Assets** and select:

Table no 3: Download Outputs

Sr.No	Output	Format	Use Case
1	Orthophoto	odm_orthophoto.tif (GeoTIFF RGB)	Base map, measurement
2	DSM	dsm.tif (GeoTIFF)	Elevation analysis, volume
3	Point Cloud	lakes.copc.laz or .ply	3D visualization, classification
4	3D Mesh	Textured_Mesh.obj	Visualization, rendering
5	HTML Report	Accuracy stats, metrics	Quality documentation

Save all files to /Survey_Date_Location/processed/

III. QGIS (Processing/Analysis) – GIS Workflow & Reporting

Step 1: Install QGIS & Essential Plugins

- i. Download **QGIS 3.44+** from <https://qgis.org>
- ii. Install and launch QGIS
- iii. Install critical plugins: Quick Map Services (satellite basemaps) & Small Map (overview)
Profile Tool (elevation cross-sections) & MMQGIS (GCP editing)

Step 2: Create New Project & Load Data

- i. **Project** → **New** → Save as Survey_Analysis.qgz
- ii. Add layers (**Layer** → **Add Layer**): odm_orthophoto.tif (orthophoto), dsm.tif (digital surface model), .laz/.ply point cloud, GCP shapefile (if available)

Step 3: Set Coordinate Reference System (CRS)

- i. **Project** → **Properties** → **CRS**
- ii. Select appropriate **Projected CRS**: India: WGS 84 / UTM Zone 43N (EPSG:32643) for west India Or local state grid (e.g., India Boxing Grid)
- iii. Enable **on-the-fly reprojection**

Step 4: Visual Quality Control

- i. Add **Google Satellite** basemap: Web → Quick Map Services → Google → Google Satellite
Compare orthophoto alignment with satellite imagery
- ii. **Hillshade DSM** for terrain visualization: Right-click dsm.tif → Properties → Symbology
Render type: Hillshade
Set Resampling to Bilinear (avoid blocky artifacts)

- iii. Toggle orthophoto visibility to inspect stitch lines

Step 5: Point Cloud Processing (Optional but Recommended)

- i. QGIS automatically converts .laz to **COPC format** on load
- ii. Access via **Processing Toolbox** → **Point Cloud**: Clip point cloud to ROI
Classify ground vs. vegetation/buildings
Generate PointCloud to DSM if needed
- iii. Export filtered point cloud as .laz

Step 6: Measurements & Mapping

- i. **Enable snapping** (for accurate measurements)
- ii. Use **Measure Area** tool: Click Area icon → Draw polygon → Get area in m²/hectares
- iii. Use **Measure Line** tool: Measure distances between features
- iv. Use **Profile Tool**: Draw line across DSM → Extract elevation cross-section

Step 7: Volume Calculation (Cut/Fill Analysis)

- i. **Raster** → **Analysis** → **DEM (Terrain Models)**
- ii. Generate volume between two DSMs (pre-construction vs. post-construction):
Raster Calculator: dsm_post - dsm_pre
Use **Raster Volume** plugin or Processing → **Raster Analysis** → **Raster Volume**
- iii. Output: Cut volume (m³), Fill volume (m³)

Step 8: Accuracy Assessment (if GCPs used)

- i. Separate GCPs into **check points** vs. **control points**
- ii. **Sample DSM at GCP locations**: Processing Toolbox → Sample raster values
- iii. Calculate **RMSE**:

$$RMSE = \sqrt{\frac{\sum_{i=1}^n (Z_{model,i} - Z_{GCP,i})^2}{n}}$$

- iv. Document bias correction if systematic offset detected

Step 9: Create Final Map Layout

- i. Project → New Print Layout
- ii. Add components: Orthophoto map (with scale bar), Hillshade DSM inset
North arrow, Legend (layers, GCPs)
Title, date, surveyor name, Accuracy statement (RMSE value)
- iii. Export as **PDF** (300 DPI) for report

Step 10: Export Final Deliverable

Table no 4: Export Final Deliverables

Sr.No	Deliverable	Format	Purpose
1	Final Orthophoto	GeoTIFF (projected CRS)	GIS layer, sharing

2	Final DSM/DEM	GeoTIFF (projected CRS)	Elevation analysis
3	Map Sheet	PDF (A1/A0)	Client presentation
4	CAD Files	DXF/DWG	If required for engineering
5	Quality Report	PDF	Accuracy metrics, methodology

CONCLUSION AND DISCUSSION

- i. The use of drones and UAV-based photogrammetry in surveying and mapping is rapidly increasing due to their ability to provide safe, fast, and accurate geospatial data collection.
- ii. UAV/UAS technology significantly reduces the time, labour, and operational effort required compared to conventional land surveying methods.
- iii. The quality as well as accuracy of UAV survey data depends on the proper selection of aircraft platforms, sensor payloads, and effective pre-flight planning.
- iv. UAVs provide repeatable and highly precise survey results, especially when validated using Ground Control Points (GCPs).
- v. Survey outputs such as orthophotos, contour maps, reduced levels, and elevation models offer reliable and actionable data for engineering and infrastructure projects.
- vi. Although UAV/UAS technology offers several advantages, it does not completely replace traditional surveying instruments and methods.
- vii. A hybrid surveying approach, combining UAVs with conventional surveying technologies, produces the most accurate and comprehensive results.
- viii. The study confirms that drone based surveys are economical and reliable despite the computational resources required for processing large datasets.
- ix. Drone technology has introduced a major transformation in geomatics and land surveying by enabling high-density data collection and advanced spatial analysis.
- x. The proposed Drone-Based geomatics Framework supports the transition from traditional mapping to the development of intelligent and high-fidelity digital twins.
- xi. Continuous advancements in sensors, processing algorithms, and UAV systems are expected to make drone-based surveying the standard approach for future projects.
- xii. UAV/UAS technology improves productivity, enhances data quality, and encourages the involvement of the next generation of land surveyors and geomatics professionals.
- xiii. The research demonstrates the strong potential of UAV technology in civil engineering, infrastructure planning, and spatial intelligence applications.
- xiv. Overall, drones are not only shaping the future of geomatics and land surveying but are actively redefining the profession through comprehensive spatial intelligence and advanced mapping capabilities.

FUTURE SCOPE

Future Scope The evolution of drone-based geomatics will be driven by several key trends:

Real-Time On board Data Processing

Future advancements in UAV technology will enable real-time on board processing through edge computing systems. This will allow drones to process survey data during flight and provide instant preliminary outputs such as orthophotos, elevation models, and contour maps, thereby reducing post-processing time and improving operational efficiency.

Integration of Artificial Intelligence and Automation

The incorporation of Artificial Intelligence (AI) and Machine Learning (ML) techniques will enhance automated feature extraction and analysis from drone-generated point clouds and orthomosaics. AI-based systems will support automatic identification of roads, buildings, utilities, vegetation, and terrain changes with minimal human intervention.

Full Integration with Building Information Modelling (BIM)

Future drone surveying systems are expected to integrate seamlessly with BIM platforms for automated generation of as-built models from UAV-acquired point cloud data. This integration will significantly improve construction monitoring, infrastructure management, and digital asset maintenance.

Swarm Drone Technology for Large-Scale Surveys

The development of coordinated drone swarm technology will enable multiple UAVs to operate simultaneously for surveying extensive regions such as smart cities, highways, railways, pipelines, and industrial corridors. This approach will greatly reduce survey duration while improving data coverage and efficiency.

Advancements in BVLOS Operations and Battery Technology

Improvements in battery performance and regulatory approvals for Beyond Visual Line of Sight (BVLOS) operations will expand the use of UAVs for long-distance and large-scale mapping projects. These advancements will support applications in environmental monitoring, disaster management, agriculture, mining, and infrastructure inspection.

Block chain-Based Geospatial Data Security

Block chain technology can be integrated with UAV-based surveying systems to ensure secure and tamper-proof storage of geospatial data. This will provide an immutable digital record of survey information, enhancing reliability for legal verification, land disputes, and regulatory compliance.

Development of High-Fidelity Digital Twin Systems

Future UAV and GIS integration will facilitate the creation of intelligent digital twins for urban planning, smart city development, and infrastructure lifecycle management. These digital replicas will enable real-time monitoring, predictive analysis, and advanced decision-making processes.

Improved Sensor Technologies and Multi-Sensor Integration

The future of drone surveying will involve advanced sensor integration, including LiDAR, thermal imaging, hyper spectral cameras, and multispectral sensors. These technologies will improve data accuracy and broaden UAV applications in environmental studies, agriculture, geology, and resource management.

Cloud-Based Geospatial Data Management

Cloud computing and web-based GIS platforms will support efficient storage, sharing, and collaborative analysis of large UAV datasets. This will enable faster accessibility and remote processing for large-scale geospatial projects.

Expansion of UAV Applications in Civil Engineering and Smart Infrastructure

UAV-based surveying is expected to play a major role in future civil engineering projects, including smart infrastructure planning, transportation systems, urban development, and sustainable land management, providing faster and more precise geospatial intelligence.

REFERENCES

- [1]. Colomina, I., & Molina, P. (2014). Unmanned aerial systems for photogrammetry and remote sensing: A review. *ISPRS Journal of Photogrammetry and Remote Sensing*, 92, 79-97.
- [2]. Harwin, S., & Lucieer, A. (2012). Assessing the accuracy of georeferenced point clouds produced via multi-view stereopsis from unmanned aerial vehicle (UAV) imagery. *Remote Sensing*, 4(6), 1573-1599.
- [3]. Nex, F., & Remondino, F. (2014). UAV for 3D mapping applications: a review. *Applied Geomatics*, 6(1), 1-15.
- [4]. Siebert, S., & Teizer, J. (2014). Mobile 3D mapping for surveying earthwork projects using an Unmanned Aerial Vehicle (UAV) system. *Automation in Construction*, 41, 1-14.
- [5]. Wallace, L., Lucieer, A., Malenovsky, Z., Turner, D., & Vopěnka, P. (2016). Assessment of forest structure using two UAV techniques: A comparison of airborne laser scanning and structure from motion (SfM) point clouds. *Forests*, 7(3), 62.
- [6]. Westoby, M. J., Brasington, J., Glasser, N. F., Hambrey, M. J., & Reynolds, J. M. (2012). 'Structure-from-Motion' photogrammetry: A low-cost, effective tool for geoscience applications. *Geomorphology*, 179, 300-314.
- [7]. Zhang, C., & Kovacs, J. M. (2012). The application of small unmanned aerial systems for precision agriculture: a review. *Precision Agriculture*, 13(6), 693-712.

ACKNOWLEDGMENT

The authors would like to extend their sincere gratitude to the Management Principal, and other faculty members of Alamuri Ratnamala Institute of Engineering and Technology, Shahapur, Thane. Their support, encouragement, and valuable suggestions have been instrumental in the development and completion of this paper. The authors acknowledge their contributions and express their heartfelt appreciation for their guidance and assistance throughout the research process.

Copyright & License:



© Authors retain the copyright of this article. This work is published under the Creative Commons Attribution 4.0 International License (CC BY 4.0), permitting unrestricted use, distribution, and reproduction in any medium, provided the original work is properly cited.