

SYNERGISTIC HEPATOPROTECTIVE POTENTIAL OF *AEGLE MARMELLOS* AND *PIPERINE*: ROLE OF BIPHASIC DRUG DELIVERY IN BIOAVAILABILITY ENHANCEMENT

¹ Dr. Satyam Z. Chemate, ² Atul S. Rathod

¹ Professor & Head, Department of Pharmaceutics, Dr. V.V.P.F.'s College of Pharmacy, Ahilyanagar, Maharashtra, India. 414111

² M. Pharm Student, Department of Pharmaceutics, Dr. V.V.P.F.'s College of Pharmacy, Ahilyanagar, Maharashtra, India 414111

Abstract: Chronic liver disease, a silent epidemic induced to some extent by chemical toxicity, alcohol abuse and chronic use of medicinal drugs, has become a growing epidemic. Although there are some synthetic hepatoprotective drugs, they have limitations in terms of effectiveness due to a number of side effects and inability for long term prophylaxis. This vacuum in the therapeutic panorama has stimulated renewed enthusiasm for phytochemistry. *Aegle marmelos* (Bael), an esteemed medicinal plant, has strong antioxidant and anti-inflammatory potential. But the conversion from “kitchen remedy” to clinical product is stymied by a major drawback: low oral bioavailability. The active phytoconstituents are either metabolised or excreted too quickly to produce a long-term cure. Piperine, the bioactive alkaloid in black pepper has a metabolic answer for this problem as it inhibits the enzymes that clear all these substances. In this article, the introduction of a Biphasic Dual-Release System as the technological advancement in herbal drug-delivery system is recommended. Through development of a vehicle that can release Piperine to “prime” the metabolic environment and then sustain release *A. marmelos*, we may be able to achieve maximal therapeutic exposure – Pharmacokinetics / Pharmacodynamics: By designing a formulation that released piperine immediately (to prime the metabolic environment) and *A. marmelos* at later times (sustained fashion), there was potential for maximised therapeutic exposure to *A. marmelos*. This approach is designed to develop a classic herbal formula into a standardized, efficacious clinical candidate.

Keywords: *Aegle marmelos*, Piperine, Hepatoprotection, Bioavailability Enhancement, Biphasic Drug Delivery, Metabolic Inhibition.

1. Introduction:

The liver functions as the body's metabolic engine room, responsible for detoxifying blood, synthesizing proteins, and regulating energy balance. Because of this central role, it is uniquely vulnerable to injury from environmental toxins, viral pathogens, and lifestyle factors. The rising global burden of non-alcoholic fatty liver disease (NAFLD) and drug-induced liver injury (DILI) underscores the urgent need for safe, effective hepatoprotective therapies [1].

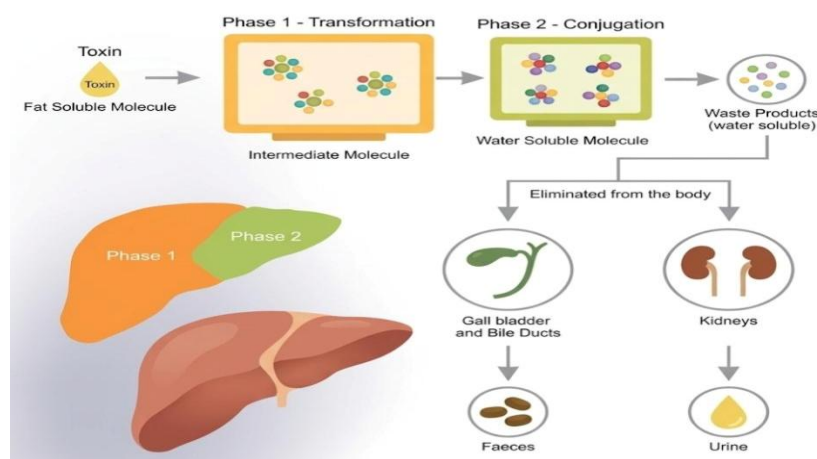


Fig. 1.1 Liver structure and its role in detoxification.

Current therapeutic options, such as Silymarin (derived from milk thistle), are the standard of care but suffer from significant pharmacokinetic limitations. They are often poorly absorbed in the gastrointestinal tract and are cleared from systemic circulation too quickly to maintain therapeutic concentrations [2]. These inefficiencies have prompted researchers to revisit traditional medicinal pharmacopoeias, particularly Ayurveda, which utilizes a vast array of plant-based compounds for hepatic health [3]. Among these candidates, *Aegle marmelos* (commonly known as Bael) stands out for its potent capacity to reverse liver damage [4].

However, the pharmaceutical potential of *A. marmelos* is restricted by a "bioavailability gap." Its key active compounds—primarily flavonoids and coumarins—are essentially trapped by the body's defense mechanisms. They are either degraded by gastric acid, metabolized by hepatic enzymes, or pumped out of cells before they can reach their molecular targets [5]. To bridge this gap, pharmaceutical scientists are turning to bio-enhancers. Piperine, the compound responsible for the pungency of black pepper, acts as a metabolic inhibitor. It temporarily suppresses the enzymes that break down drugs, effectively extending the residence time of therapeutic agents in the bloodstream [6, 7]. Recent preclinical evidence indicates that combining Piperine with *A. marmelos* creates a synergistic effect, offering significantly greater protection against liver damage than the plant extract alone [8, 9, 10]. This review explores how advanced drug delivery technology can harness this synergy to create a more effective liver therapeutic.

2. Phytopharmacology of *Aegle marmelos* :

2.1 Botanical and Traditional Context:

Aegle marmelos (L.) Correa, widely known as Bael or Bilva, is a deciduous tree native to the Indian subcontinent and Southeast Asia. Belonging to the Rutaceae family, it is characterized by its aromatic trifoliate leaves and hard-shelled fruit [11, 12]. In traditional medicine, *A. marmelos* holds a revered status. Ayurvedic texts classify it as *Yakrit- uttejaka* (liver stimulant), validating its centuries-old application in managing jaundice and digestive disorders [13, 14]. While the fruit pulp is typically utilized for gastrointestinal issues like dysentery, the leaves and bark are specifically noted for their ability to combat liver inflammation and metabolic dysfunction [12, 15]. This historical precedence provides a strong rationale for investigating its specific pharmacological mechanisms [11].



Fig.1.2 *Aegle marmelos* (Bael fruit)

2.2 Phytochemical Profile:

The therapeutic efficacy of *A. marmelos* is not due to a single molecule but a complex matrix of bioactive phytochemicals. Modern chromatographic analyses have identified specific markers responsible for its hepatoprotective effects [16]. Key bioactive classes include:

Class of Compounds	Major Compounds	Pharmacological Significance
Coumarins	Marmelosin, Luvangetin, Psoralen, Aegelin	These compounds are critical for inhibiting the formation of toxic metabolites within the liver [12, 17].
Flavonoids	Rutin, Quercetin, Kaempferol	Potent antioxidants that scavenge free radicals, preventing the lipid peroxidation that destroys cell membranes [11, 18].
Tannins & Phenolic Acids	Gallic acid, Ferulic acid, other polyphenols	These stabilize liver cell membranes and chelate harmful metal ions, reducing overall oxidative stress [19, 16].

2.3 Mechanisms of Liver Protection:

Preclinical studies utilizing hepatotoxins like carbon tetrachloride (CCl₄) and paracetamol have mapped out the multi-faceted way A. marmelos protects liver tissue [20]:

- **Oxidative Stress Reduction:** It upregulates the body's internal antioxidant enzymes—specifically Superoxide Dismutase (SOD) and Catalase (CAT)—restoring the liver's natural defense grid [11].
- **Membrane Stabilization:** It prevents the leakage of liver enzymes (ALT, AST) into the bloodstream, a clinical hallmark of hepatocellular damage [21].
- **Mitochondrial Support:** It ensures liver cells continue to produce energy (ATP) even under toxic stress, preventing necrotic cell death [12].

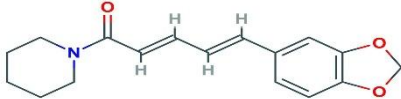
2.4 The Pharmacokinetic Barrier:

Despite these clear biological benefits, the clinical utility of A. marmelos is hamstrung by its pharmacokinetics. The active coumarins and flavonoids are hydrophobic (poorly water-soluble) and subject to extensive first-pass metabolism. Essentially, the liver breaks down the very compounds meant to protect it before they can reach effective concentrations [6, 19]. This reality necessitates a delivery system that can bypass or suppress these metabolic barriers.

3. Piperine: The Metabolic Key:

3.1 Chemical Profile:

Piperine is the primary alkaloid found in *Piper nigrum* (black pepper) and *Piper longum*. Beyond its role as a culinary spice, pharmaceutical scientists recognize it as a powerful "bio-enhancer"—a molecule that improves the absorption of other drugs without necessarily having therapeutic activity of its own [22, 23].

Chemical Information
Chemical Name: Piperine
IUPAC Name: 1-Piperoylpiperidine
Molecular Formula: C ₁₇ H ₂₁ NO ₃
Molecular Weight: 285.34 g/mol
Chemical Class: Alkaloid (Piperidine derivative)
Chemical Structure:


3.2 Mechanism of Bio-Enhancement:

Piperine functions by manipulating the body's absorption and metabolic pathways [22, 24]:

- **Enzyme Inhibition:** It inhibits major drug-metabolizing enzymes, specifically CYP3A4 and UDP-glucuronyl transferase (UGT). This slows down the degradation of co-administered drugs.
- **Efflux Blockade:** It inhibits P-glycoprotein (P-gp), a transport pump that actively ejects drugs from intestinal cells back into the gut, forcing them to remain available for absorption.
- **Permeability Modulation:** It alters the lipid dynamics of the intestinal wall, making it easier for large molecules to permeate into the bloodstream.

3.3 Evidence of Synergy:

The concept of using Piperine to boost herbal efficacy is well-established. It has been shown to increase the bioavailability of Curcumin by 2000% in humans [25]. Specific to liver health, Rathee et al. (2018) demonstrated that when *A. marmelos* was administered with Piperine in rat models, the reduction in liver damage markers (ALT/AST) was significantly more pronounced than with *A. marmelos* alone [10]. This confirms that Piperine can effectively "shield" the active components of *Bael* from premature metabolism.

4. Rationale for Biphasic Dual-Release Delivery:

4.1 The Synchronization Problem

A major flaw in many conventional herbal formulations is the simultaneous release of ingredients. If Piperine and *A. marmelos* are released at the exact same moment, the therapeutic compounds may be metabolized before the Piperine has had a chance to inhibit the necessary enzymes. The "metabolic gate" is essentially still closed when the drug arrives.

4.2 The Biphasic Solution

To solve this, we propose a Biphasic Dual-Release System. This formulation creates a calculated time delay, or a "Prime and Release" strategy:

- **Phase I (Immediate Release):** Piperine is released rapidly (within 15-30 minutes). This floods the local environment, inhibiting CYP450 enzymes and P-gp pumps. The gut is now "metabolically primed."
- **Phase II (Sustained Release):** The *A. marmelos* extract is released slowly over 8–10 hours. Because the metabolic enzymes are

already inhibited by Phase I, the extract can pass into the bloodstream with minimal degradation [26, 27]. This temporal sequencing ensures that the therapeutic agent is always entering a protected environment, maximizing its systemic presence and duration of action.

5. Technological Approaches in Pharmaceuticals:

To achieve this dual-release profile, we utilize specific pharmaceutical technologies integrated into a single dosage form (capsule).

5.1 Immediate Release (IR) Component

The Piperine is formulated into Immediate Release granules using superdisintegrants like Sodium Starch Glycolate. These excipients act like sponges; they absorb water and swell rapidly, breaking the granule apart and releasing Piperine instantly upon reaching the acidic environment of the stomach [28].

5.2 Sustained Release (SR) Component

The A. marmelos extract is processed into Sustained Release pellets using hydrophilic polymers such as HPMC (Hydroxypropyl Methylcellulose). When these pellets contact fluid, the polymer hydrates to form a viscous gel layer around the drug core. The drug must diffuse through this gel, which controls the release rate over several hours [29].

5.3 Formulation Technique

The preferred manufacturing method is Extrusion-Spheronization. This technique produces uniform, spherical pellets that flow easily and allow for high drug loading. The SR pellets (Bael) and IR granules (Piperine) are then filled into a single hard gelatin capsule, providing a convenient "once-daily" dosage form for the patient [30].



Fig. 1.3 capsule containing Aegle marmelos and Piperine

5.4 Validation Strategies

In Silico (Computer Simulation): Molecular docking studies mimic the interaction between Piperine and metabolic enzymes, providing theoretical proof of inhibition without the need for initial animal testing [27, 23].

In Vitro Dissolution: Laboratory tests using simulated gastric and intestinal fluids confirm that the Piperine dissolves first, followed by the slow, steady release of the Bael extract [31].

6. Moving Beyond Animal Models (Ethical Research) :

Modern pharmaceutical research is aggressively shifting away from animal testing toward ethical alternatives, aligned with the "3Rs" (Replacement, Reduction, Refinement).

6.1 Biochemical Assays:

Instead of sacrificing animals to check for liver protection, we can utilize cell-based assays.

Liver cell lines (like HepG2) can be exposed to toxins and then treated with the formulation. We then measure biomarkers like ALT, AST, and Lipid Peroxidation directly from the cell culture. This provides precise, quantitative data on hepatoprotection without animal suffering [32, 19].

6.2 Biomimetic Dissolution:

Advanced dissolution testing mimics the pH changes and transit times of the human gut. By proving that the drug releases correctly in these simulated fluids, we can predict its behavior in the human body (In Vitro-In Vivo Correlation), reducing the need for extensive pharmacokinetic studies in animals [33].

7. Discussion:

The development of this biphasic system represents a shift from empirical herbalism to rational drug design. While the liver-protective properties of *Aegle marmelos* are well-documented in traditional texts and modern studies [4, 9], the translation to clinical practice has been poor due to bioavailability issues.

This study argues that simply mixing ingredients is insufficient. The timing of drug release is as critical as the ingredients themselves. By prioritizing the release of the bio-enhancer (Piperine), we essentially disarm the body's metabolic defenses before the therapeutic agent (*A. marmelos*) arrives. This mechanistic approach aligns with the findings of Tripathi et al. (2022) and Sharma & Gupta (2025), who emphasize that the future of phytopharmaceuticals lies in smart delivery systems [23, 34].

The result is a formulation that potentially offers consistent therapeutic levels with lower doses, reducing the risk of side effects and improving patient compliance. It bridges the gap between the "kitchen remedy" and the "pharmaceutical product."

8. Conclusion:

The hepatoprotective potential of *Aegle marmelos* is undeniable, yet its clinical utility has been limited by its inability to survive first-pass metabolism. Piperine offers a potent solution to this problem, acting as a metabolic inhibitor that enhances systemic exposure. However, the true innovation lies in the Biphasic Dual-Release System. By temporally separating the release of these two agents, we ensure that the bio-enhancer is active exactly when it is needed.

This approach not only maximizes therapeutic efficacy but does so using scalable, industrial-standard technologies. Furthermore, by employing *in silico* and cell-based validation methods, this research adheres to modern ethical standards, reducing reliance on animal models. Ultimately, this formulation strategy offers a viable path toward a standardized, highly effective herbal drug for chronic liver disease.

9. Future Perspectives:

The path forward involves transitioning from proof-of-concept to product development. Key areas for future research include:

IVIVC Establishment: Developing a mathematical correlation between lab dissolution data and actual blood levels in humans to streamline regulatory approval.

Quality by Design (QbD): Using statistical tools to optimize manufacturing parameters (like polymer thickness and pellet size) to ensure every batch is identical.

Regulatory Compliance: Ensuring the product meets emerging guidelines for "Phytopharmaceuticals," which require rigorous standardization of marker compounds [34].

Intellectual Property: This specific biphasic mechanism is novel and patentable, offering significant commercial potential for pharmaceutical companies looking to expand their liver-health portfolios.

10. References:

1. Asrani SK, Devarbhavi H, Eaton J, Kamath PS. Burden of liver diseases in the world. *J Hepatol.* 2019;70(1):151–171.
2. Federico A, Dallio M, Loguercio C. Silymarin/Silybin and chronic liver disease: A marriage of many years. *Molecules.* 2017;22(2):191.
3. Singh S. An appraisal of bioavailability enhancers in Ayurveda. *J Ethnopharmacol.* 2016;189:342–354.
4. Baliga MS, Bhat HP, Joseph N, Fazal F. *Aegle marmelos* (L.) Correa (Bael): A phytopharmacological review. *Phytother Res.* 2011;25(12):1746–1765.
5. Pandey KB, Rizvi SI. Plant polyphenols as dietary antioxidants in human health. *Oxid Med Cell Longev.* 2009;2(5):270–278.
6. Atal CK, Dubey RK, Singh J. Biochemical basis of enhanced drug bioavailability by piperine. *J Pharmacol Exp Ther.* 1985;232(1):258–262.
7. Kesarwani K, Gupta R. Bioavailability enhancers of herbal origin: An overview. *Pharm Biol.* 2013;51(3):307–321.
8. Singh D, et al. Hepatoprotective activity of *Aegle marmelos* and synergistic effect with piperine in experimental models. *BMC Chem.* 2018;12:94.
9. Rathee D, Kamboj A, Sidhu S, Sachdev RK, Guraya SS. Augmentation of hepatoprotective potential of *Aegle marmelos* in combination with piperine in carbon tetrachloride-induced hepatotoxicity in Wistar rats. *BMC Chem.* 2018;12:94.
10. Rathee D, Kamboj A, Sidhu S, Sachdev RK, Guraya SS. Hepatoprotective effect of *Aegle marmelos* augmented with piperine

- co-administration in paracetamol-induced liver toxicity. *Rev Bras Farmacogn.* 2018;28(1):65–72.
11. Baliga MS, Bhat HP, Joseph N, Fazal F. Phytochemistry and medicinal uses of the bael fruit (*Aegle marmelos* Correa): A concise review. *Food Res Int.* 2011;44(7):1768–1775.
 12. Maity P, Hansda D, Bandyopadhyay U, Mishra DK. Biological activities of crude extracts and chemical constituents of *Aegle marmelos* (L.) Correa. *Indian J Exp Biol.* 2009;47(11):849–861.
 13. Sharma PV. *Dravyaguna Vijnana (Materia Medica–Vegetable Drugs)*. Varanasi: Chaukhambha Bharati Academy; 2001.
 14. Kalaivani T, Premkumar N, Ramya S, Jayakumararaj R. Investigations on hepatoprotective activity of leaf extracts of *Aegle marmelos* (L.) Corr. (Rutaceae). *Ethnobot Leaflet.* 2009;2009(1):4.
 15. Singh A, Singh S. *Aegle marmelos*: A review on its medicinal properties. *J Pharm Res.* 2012.
 16. Mandal S, Ghosh D, Mitra A. Efficiency of *Aegle marmelos* leaf and fruit extracts against chemically induced hepatotoxicity and identification of bioactive constituents by LC–MS/MS. *J Ethnopharmacol.* 2019;233:68–77.
 17. Brijesh S, Daswani P, Tetali P, Antia N, Birdi T. Studies on the antioxidant activity of *Aegle marmelos* leaves. *Pharm Biol.* 2009;47(11):1026–1030.
 18. Pandey G, Sharma M. Flavonoids and their role in hepatoprotection: A review. *Int J Pharm Sci Rev Res.* 2014.
 19. Rice-Evans C, Miller N, Paganga G. Structure-antioxidant activity relationships of flavonoids and phenolic acids. *Free Radic Biol Med.* 1996;20(7):933–956.
 20. Thirunalasundari T, Sumitha P. Hepatoprotective activity of *Aegle marmelos* in CCl₄-induced liver damage in rats. *J Phytol.* 2011;3(9):23–27.
 21. Singh D, et al. Evaluation of hepatoprotective activity of *Aegle marmelos* extract in experimental animal models. *BMC Complement Altern Med.* 2015.
 22. Srinivasan K. Black pepper and its pungent principle piperine: A review of diverse physiological effects. *Crit Rev Food Sci Nutr.* 2007;47(8):735–748.
 23. Tripathi P, Mishra A, Dwivedi S, Singh R. Molecular and pharmacological aspects of piperine as a potential therapeutic agent: A review. *Biomed Pharmacother.* 2022;159:113010.
 24. Chaudhri SK, Jain S. A systematic review of piperine as a bioavailability enhancer. *J Drug Deliv Ther.* 2023;13(4):133–136.
 25. Shoba G, Joy D, Joseph T, Majeed M, Rajendran R, Srinivas PS. Influence of piperine on the pharmacokinetics of curcumin in animals and human volunteers. *Planta Med.* 1998;64(4):353–356.
 26. Colombo P, Bettini R, Santi P, Peppas NA. *Drug Release from Swellable Matrices*. Boca Raton: CRC Press; 2000.
 27. Kitchen DB, et al. Docking and scoring in virtual screening for drug discovery. *Nat Rev Drug Discov.* 2004;3:935–949.
 28. Aulton ME, Taylor K. *Aulton's Pharmaceutics: The Design and Manufacture of Medicines*. Edinburgh: Elsevier; 2018.
 29. Colombo P, Bettini R, Peppas NA. Drug release from hydrophilic matrix tablets. *J Control Release.* 2000.
 30. Ghebre-Sellassie I. *Pelletization Techniques in Pharmaceutical Formulation*. New York: Marcel Dekker; 1989.
 31. United States Pharmacopeia. USP <711> Dissolution testing guidelines.
 32. OECD. *Guidelines for the Testing of Chemicals: Alternative Methods to Animal Testing in Toxicology*. 2020.
 33. United States Pharmacopeia. USP <1092> Disintegration and dissolution of solid oral dosage forms.
 34. Sharma S, Gupta S. Herbal bioenhancers in pharmaceutical drug delivery systems. *Chem Biodivers.* 2025;22(5):e202500760.