

“THE ICT ROLE FOR ASSESSMENT OF COTTON, ONION AND YIELD ESTIMATION FOR VAIJAPUR TEHSIL”

1st Anil B. Thore, 2nd Sachin B. Shinde, 3rd Nilesh L. Kulkarni

Assistant Professor,BCS, Assistant Professor,BCA, Assistant Professor,BCA

Department of Computer Science & Management Science

Vinayakrao Patil Mahavidyalaya Vaijapur Dist. Chhatrapati Sambhajinagr, (MS). India

ABSTRACT

The present study demonstrates the application of remote sensing for the estimation of areas corresponding to crop covered in the vaijapur tehsil district of Aurangabad, The aim of this study is to Estimate seasonal crop type on tehsils level specifically Cotton and Onion using Landsat 8 band OLI (Operational Land Imager) data; for finding the actual crop area covered by Vaijapur Taluka. The main objective of the present study is to explore whether the Fuzzy classifier can improve the accuracy of crop classification as compared to other traditional Classifiers, such as Maximum likelihood, Mahalanobis etc. The attempt has been done to classify different crops at a smaller scale. The Landsat time series 8 band OLI data was used to investigate multiple crop phenomena. Two scenes were acquired in Kharif seasons. Three indices such as NDVI, SAVI, and RVI, were used to know vegetation condition. The Spectral signatures generated from data for the residues of Cotton and Onion based on prior knowledge of the field work. Four techniques based on Maximum Likelihood, Mahalanobis Classifier, Knowledge classifier and fuzzy classification techniques were used to extract the crops information based on the signatures.

Keywords

Knowledge Classification, Maximum Likelihood Classification, Crop, Accuracy Assessment, IRS-P6 Advanced Wide Field Sensors.

INTRODUCTION

Agriculture is the backbone of our country. It is the only major source of food production and supply so that can raise income and employment of rural populations. Agriculture plays a major role in global economic development. It can help reduce poverty for 75% of the world's poor, who live in rural areas and work mainly in farming. It mainly contributes a major portion in our national and global income. [1].

Nowadays population is tremendously increasing the demand of food and also increases. The 80% of people's livelihoods depend on the agriculture sector. The demands of the food requirements are not fulfilled with the traditional methods. Thus ICT a new automated method was introduced. These new methods satisfied the food requirements and also improved yield production. [2]. Agriculture faces a range of modern and serious challenges, particularly in Developing countries due to climate change, irregularity in rainy season and continually increasing the settlement areas and urban infrastructure. It is in this context that ICTs play a crucial role in helping people meet the demand for increased food production. ICTs can play a very crucial role by broadcasting information to farmers to help them make better well informed decisions. Through ICTs people can obtain the latest up-to-date information, learn and practice sustainable farming. It is in this regard that these case studies have been documented in this report to understand the various unique pathways through which ICTs can play a crucial role in promoting agricultural development at regional as well as Tehsil level. [3].

Every day new difficulties and challenges are encountered in agriculture. Using information and communication technologies (ICTs) can provide a key facility for more efficient crop production. Simply the ICT is defined as a hub of technologies that support in storage processing and analysing data or information, communication of data, distribution of data. ICT therefore comprises technologies such as computers (desktop and laptop), mobile phones, Internet connection, peripherals, and software that are projected to perform information processing and communication purposes. The application of ICT in agriculture is becoming progressively important. E-agriculture is a developing field aiming on the improvement and development of agricultural and rural sector through enhanced information and communication processes. More importantly-agriculture involves the concepts, design, development, assessment, and application of advanced methods to use information and communication technologies (ICT) in the rural area, focusing on crop production. All stakeholders of crop production system need information and understanding about these stages to manage them efficiently. [4, 5]

With the help of ICT and Remote Sensing technology in agriculture has brought a new revolution. A remote sensing technology taking a closer look from a distance is the concept behind remote sensing; it is broadly defined as a method of obtaining information about properties of an object without coming into physical contact with that object. This technology has protected the crop yield from various factors like the climate changes, insect attack, and crop disease with the help of sensors and other means embedded in robots and drones which is continuously monitoring the field area such as for irrigation, weeding, spraying [5]. These technologies save the excess use of water, pesticides, herbicides, maintain the fertility of the soil, also help in the efficient use of man power and elevate the productivity and improve the quality. This case study is mainly focused on the current implementation of automation in agriculture, Satellite Image processing, land use land cover multiple crop classification and identification, improve the yield and crop acreage estimation through Remote Sensing and ICT technologies. [6, 7]

STUDY AREA

This chapter explores the study area data used their preprocessing and the overall methodology adopted for the study. This chapter explores the study area data used their preprocessing and the overall methodology adopted for the study.

The area taken for this study was Vaijapur Taluka (19° 55' 12" N 74° 43' 48" E) region. Located on the Narangi River. It is bordered by

the Nasik districts to the west, Kannad Tahsil to the north, Gangapur Tahsil to the east, and Ahmednagar districts to the south. Vaijapur is the headquarters of Vaijapur Tahsil and also known as the Gateway of Marathwada. It is the Maharashtra provenance of India with temporal variation through temporal multispectral sensors images. In this study remotely sensed images of Landsat USGS satellite were selected for crop identification. All data has been be collected through the multispectral remote sensing sensors Landsat 8 band OLI(Operational Land Imager) time series 2 months such as September and October 2014.

Agriculture is the main economic activity in the region and local people are dependent on water availability from Narangi River and Nandur-Madhmeshwar Canal.

The most important soils of the Vaijapur Taluka are the black clayey soils on plains interspersed with occasional stretches of shallow soils on ridges. In the north, the soils are shallow and poor and in the south they are deep and fertile and particularly so in the Godavari valley. They are all derived from Deccan trap. The soils can be classified as light, medium and heavy according to the depth, texture and location. Soil has very dark brown clay, blocky, hard and quartz throughout the layer. Below 30 cm partially decomposed murum layer is seen.

There are two main cropping seasons: KHARIF, from June, July to October and Rabbi from November to April. The main crops grown in the area; where Wheat, Onion, Cotton, Cotton, Onion, Bajra, Jwar, Groundnut, Moong Beal (green gram) and several different vegetables.

The major KHARIF crops of the study area are Cotton; onion and cotton while Bajra, Moong, onion, groundnuts are grown occasionally (depend on monsoon nakshttra). For these crops the Field (land) is prepared in April and May and the seed are sown at the start of rains in June. The crops are ready for harvesting by the beginning of November. The major rabbi crops in Vaijapur Taluka are Wheat, Onion, Jawar, Chana. The farmers prepare the ground at the beginning or end of October depending on monsoon if sometimes beginning of November and harvesting starts in early march.

METHODOLOGY

Satellite Data

The study is based on the utilization of multi-resolution sensor characteristics for identification of specific crops. For this purpose a variety of remotely sensed images, from different sensors, that offer a range of spatial and spectral resolution, were taken. As study is concentrated on Discrimination of Cotton and Onion at Taluka level. The images of two dates are acquired i.e crop growth stage (28th September, 2014) and Harvesting stage (30th October, 2014). The images of Landsat 8 band OLI (Operational Land Imager) sensors are acquired, which offers spatial resolutions of 30m, or 15m including Pan band respectively.

The OLI data quality was slightly better than the ETM+ data quality in the visible bands, especially the near-infrared band of OLI. Moreover OLI data were a reliable data source for monitoring land cover and provided the continuity in the Landsat earth Observation.

The study is conducted to identify specific crop Cotton and onion using Landsat 8 OLI data and to demonstrate its application for land cover classification Vaijapur Sub-District, Aurangabad, Maharashtra.

Satellite data Acquisition

The two Landsat 8 OLI data (path/row:147/46 and 147/46,45) for the study area on September 28, 2014 and October-30, 2014 were downloaded from the United States Geological Survey (USGS) websites(<http://landsatlook.usgs.gov>). The clouds were nearly absent in the obtaining data. There for the quality of multispectral data was good.

As this study is based on utilization of multi-sensor characteristics to detect identify the crop area accurately, it was mandatory to acquire the Landsat 8 band satellite datasets of same dates. The medium resolution Landsat 8 OLI sensor is 30m, having the receptivity of 16 days. Data were projected in WGS 84 Datum.

Sensor	Acquisition Date	Path	Row	ID	Cloud Coverage	File Format
OLI	2014-09-28	147	46	LC81470462014271	1%	GeoTiff
OLI	2014-10-30	147	46	Lc81470462014303	0%	GeoTiff

Sensor Characteristic's

Landsat 8 carries two instruments: The Operational Land Imager (OLI) sensor includes refined heritage bands, along with three new bands: a deep blue band for coastal/aerosol studies, a shortwave infrared band for cirrus detection*, and a Quality assessment band. The Thermal Infrared Sensor (TIRS) sensor provides two thermal bands. These sensors both provide improved signal-to-noise (SNR) radiometric performance quantized over a 12-bit dynamic range. This translates into 4096 potential grey levels in an image compared with only 256 grey levels in previous 8-bit instruments. Improved signal to noise performance enable better characterization of land cover state and condition. Products are delivered as 16-bit images (scaled to 55,000 grey levels).

Landsat 8 images have a large file size, at approximately 1 GB compressed

Band	Description	Wavelength (micrometers)	Resolution (meters)
1*	Violet-Deep Blue	0.43 – 0.45	30
2*	Blue	0.45 – 0.51	30
3*	Green	0.53 – 0.59	30
4*	Red	0.64 – 0.67	30
5	Near Infrared	0.85 – 0.88	30
6	Shortwave Infrared	1.57 – 1.65	30
7	Shortwave Infrared	2.11 – 2.29	30
8*	Panchromatic	0.50 – 0.68	15
9	Cirrus clouds	1.36 – 1.38	30
10**	Thermal infrared	10.62 – 11.19	30
11**	Thermal infrared	11.50 – 12.51	30

* Within the visible spectrum
 ** 100-meter resolution data interpolated to 30 meters

Table 1: Sensor Characteristics Landsat 8 Imaging Sensor

Layer Stacking

Remote sensing sensors record the spectral properties (radiance, emittance, and backscatter) of terrain features in different wavelength regions. Different features reflect differently in different bands. Therefore, the selection of bands for any study will depend on the band in which it gives distinct responses. So, even if there are many bands in a sensor system, all may not be useful for our purpose and selection of wrong bands will lead to incorrect interpretation. Stacking is a process of combining in layers the bands required for any study into a single output file[2].

In this step the downloaded satellite image bands were stacked for creation of multispectral image. Hence 8 separate bands were imported in ERDAS Imagine 2013 using layer stacking option and selected eight bands individually.



Figure 1: Layer Stacking of Landsat 8 Band

Software Used

ERDAS IMAGINE is a [remote sensing application](#) with [raster graphics editor](#) abilities designed by ERDAS for [geospatial](#) applications. The latest version is 2013, version 13.0.2. ERDAS IMAGINE is aimed primarily at geospatial raster data processing and allows the user to prepare, display and enhance digital images for mapping use in [geographic information system](#) (GIS) or in [computer-aided design](#) (CAD) software. It is a toolbox allowing the user to perform numerous operations on an image and generate an answer to specific geographical questions

ArcGIS is a comprehensive system that allows people to collect, organize, manage, analyze, communicate, and distribute geographic information. As the world's leading platform for building and using geographic information systems (GIS), ArcGIS is used by people all over the world to put geographic knowledge to work in government, business, science, education, and media. ArcGIS enables geographic information to be published so it can be accessed and used by anyone. The system is available everywhere using web browsers, mobile devices such as smartphones, and desktop computers.

Masking-out Study Area

The vector layer of Area of Interest was prepared and then this layer was used to subset the study area from whole Landsat scene, as shown in Figure 4.4

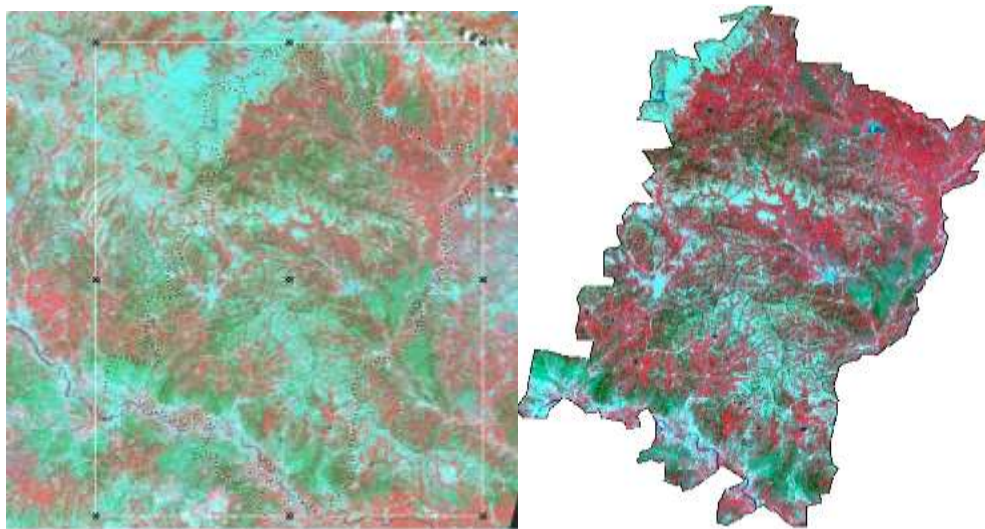


Figure 2: Landsat 8 Image Subset of Study Area

Image Classification & Analysis

The results of the image classification are obtained using four different supervised classifiers. The accuracy of the classified images was assessed with error matrices, percentage of producer, user's accuracies and Kappa statistics. The results of this study show that, classification of remotely sensed imagery gives valuable information in the agricultural yield. The crop acreage estimation analysis is done by Maximum Likelihood, Mahalanobis Distance Classifier, Knowledge Classifier and Fuzzy Classifier approaches [1][2][3][4]. The classification is done through assigning seven classes such as Cotton, Onion, Other Crops, Barren Land, Fellow Land, Settlement and Water. The ground truth points were collected through *GPSReceiver Device*. The figure 6 shows photograph of *GPS receiver* [5][6].



Figure 3: GPS Receiver

For the image classification and analysis we have used *LANDSAT 8 OLI* images. The original images are shown in figure 7 and 8.

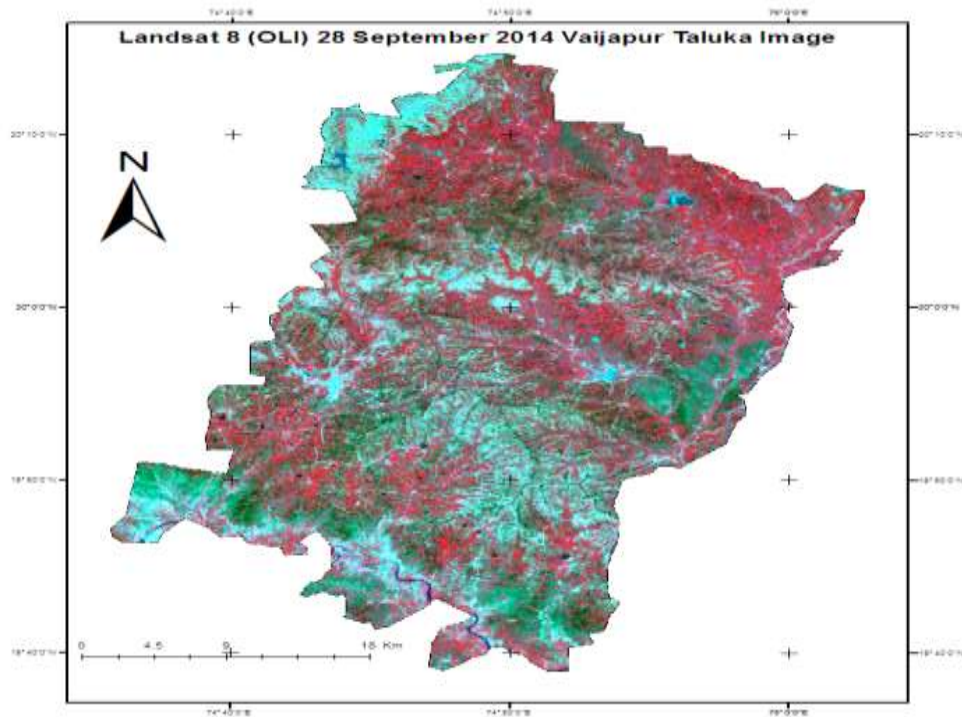


Figure 4: Landsat 8 band (OLI) FCC image of 28 September 2020

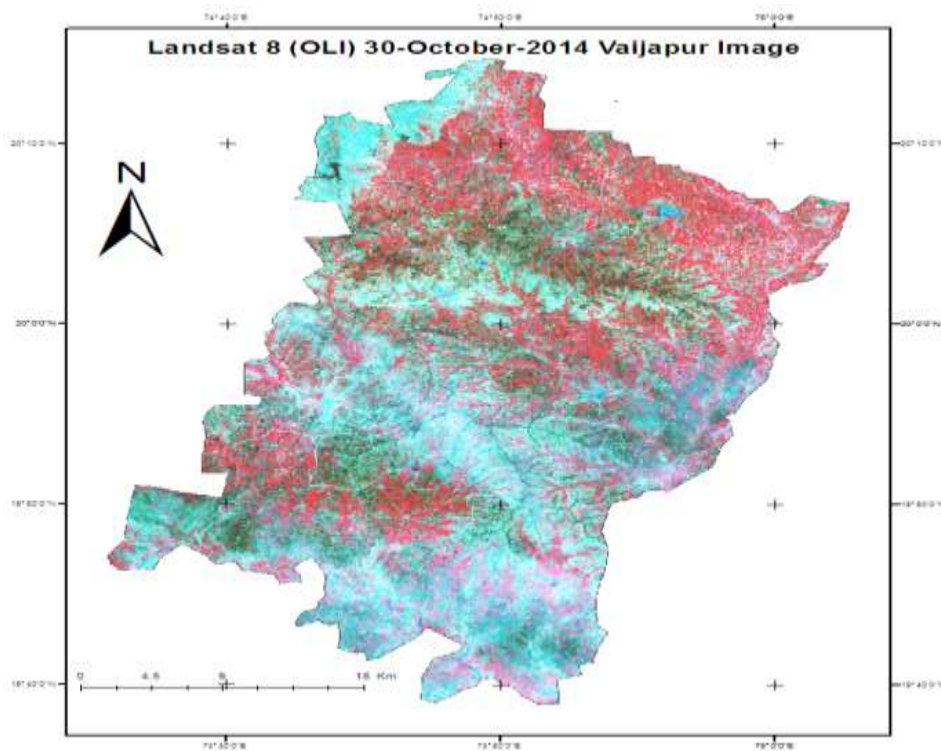


Figure 5: Landsat 8 band (OLI) FCC image of 30 October 2020

Maximum Likelihood Classification

The satellite image classification using Maximum Likelihood Supervised Classifier results on the 28 September 2020 satellite image give Cotton 9283.41ha, Onion 21140.3ha, OtherCrops are 82919.1ha, Barren Land 27194.7ha, Fellow Land 16032ha, Water 1326.28ha and Settlement 1577.5ha respectively. The results are shown in table 2. LULC area covered in hectare in Vaijapur Taluka using Maximum Likelihood Classifier also following figure 9 shows the image of seven classes they covered total area in Vaijapur Taluka.

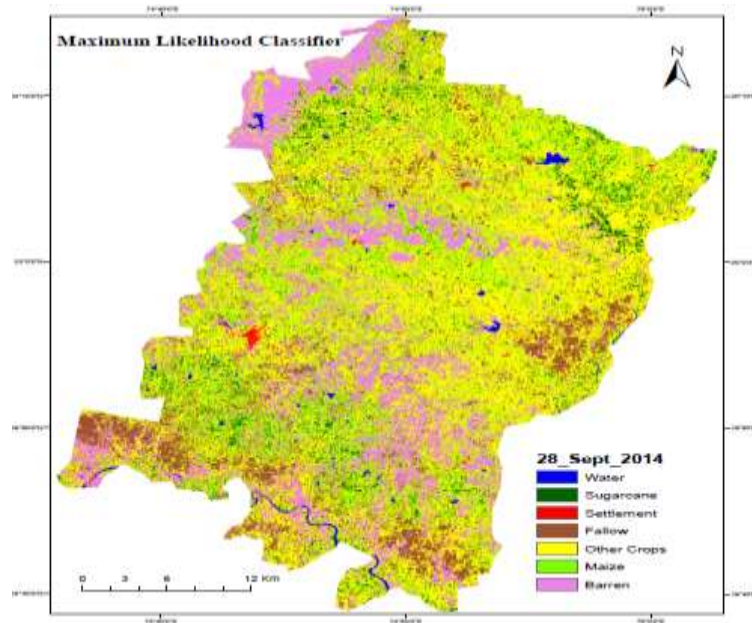


Figure 6: Classified LULC Map using Maximum Likelihood Classifier 28 Sept- 2020

Table 2 LULC Area covered using Maximum Likelihood Classifier:

Sept-2020 MXL Classifier LULC Area in Hector	
Class Names	Area in Hector
Water	1326.28
Cotton	9283.41
Onion	21140.3
Fellow Land	16032.1
Barren Land	27194.7
Settlement	1577.5
Crop	82919.1
Total Area	159473.39

The following graph 2 shows the overall distribution of seven classes.

Graph 1: LULC Area covered using Maximum Likelihood Classifier

Mahalanobis Classifier

The satellite image classification using Mahalanobis classifier results that shows Crop area covered in month September 82659ha, Barren Land 28329.1ha, Fellow Land 15436.3ha, Onion 21441.3ha, Cotton 8673.7ha, Settlement 1589.78ha and Water bodies 1344.6ha. Following figure 5.5 shows the Classified LULC map using Mahalanobis Classifier in the month 28-September 2020 for Vaijapur Taluka. The table 5.2 shows the LULC area using Mahalanobis Classifier for same area.

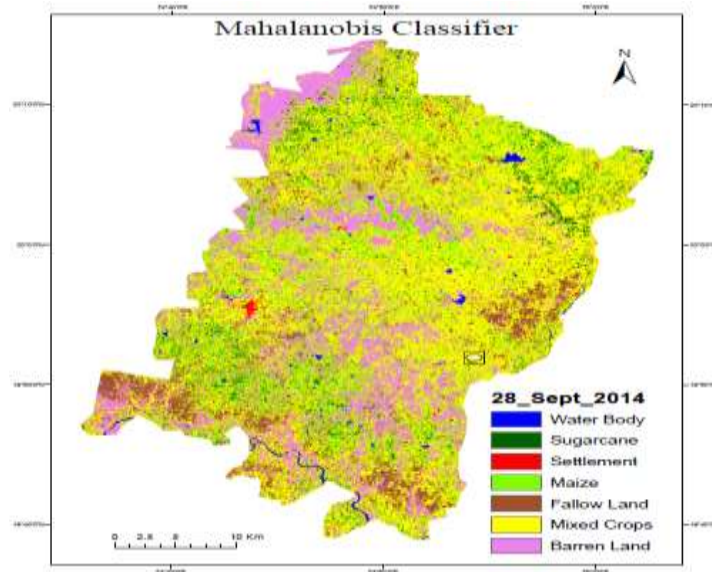


Figure 7: Classified LULC map using Mahalanobis Classifier 28 Sept- 2020

28 Sept-2020 Mahalanobis Classifier LULC Area	
Class Names	Area in Hector
Water	1344.6
Cotton	8673.37
Onion	21441.3
Fellow Land	15436.3
Barren Land	28329.1
Settlement	1589.78
Crop	82659
Total Area	159473.45

Table 3: LULC Area covered in Hector using Mahalanobis Classifier

The following graph 2 shows overall distribution of seven classes.

Graph 2: LULC Area covered using Mahalanobis Classifier

Maximum Likelihood Classifier

The satellite image classification using Maximum Likelihood Classifier results that shows Crop area covered 49751.4ha in month September, Barren Land 37332.4ha, Fellow Land 55338.5ha, Onion 3687.12ha, Cotton 10989.8ha, Settlement 2018.9ha and Water bodies 355.185ha. Following figure 11 shows the Classified LULC map using Maximum Likelihood Classifier in the month 30-October 2020. The table 5.5 shows Maximum Likelihood Classifier result for seven classes. The graph 11 shows seven class distribution according to results.

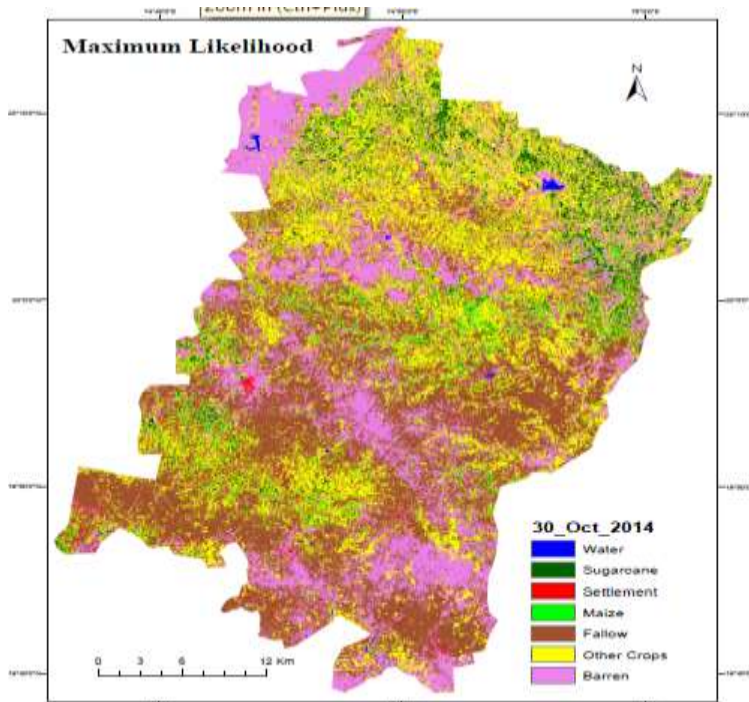


Figure 8: Classified LULC map using Mahalanobis Classifier 28 Sept- 2020

30 Oct-2020 MXL Classifier LULC Area in Hecor	
Class Names	Area in hector
Water	355.185
Cotton	10989.8
Onion	3687.12
Fellow	55338.5
Barren	37332.4
Settlement	2018.9
Crop	49751.4
Total Area	159473.30

Table 4: LULC Area covered in Hecor using Maximum Likelihood Classifier

The satellite image classification using Mahalanobis Classifier results shows crop area covered 49605.5ha in month October 2020, Barren Land 40118.7ha, Fellow Land 53510ha, Onion 3332.32ha, Cotton 10529.1ha, Settlement 2026.13ha and Water bodies 351.697ha. Following figure 5.8 shows the Classified LULC map using Mahalanobis Classifier in the month 30-October-2020. The table 5 shows Mahalanobis Classifier result for seven classes. The graph 12 shows seven class distribution according to results.

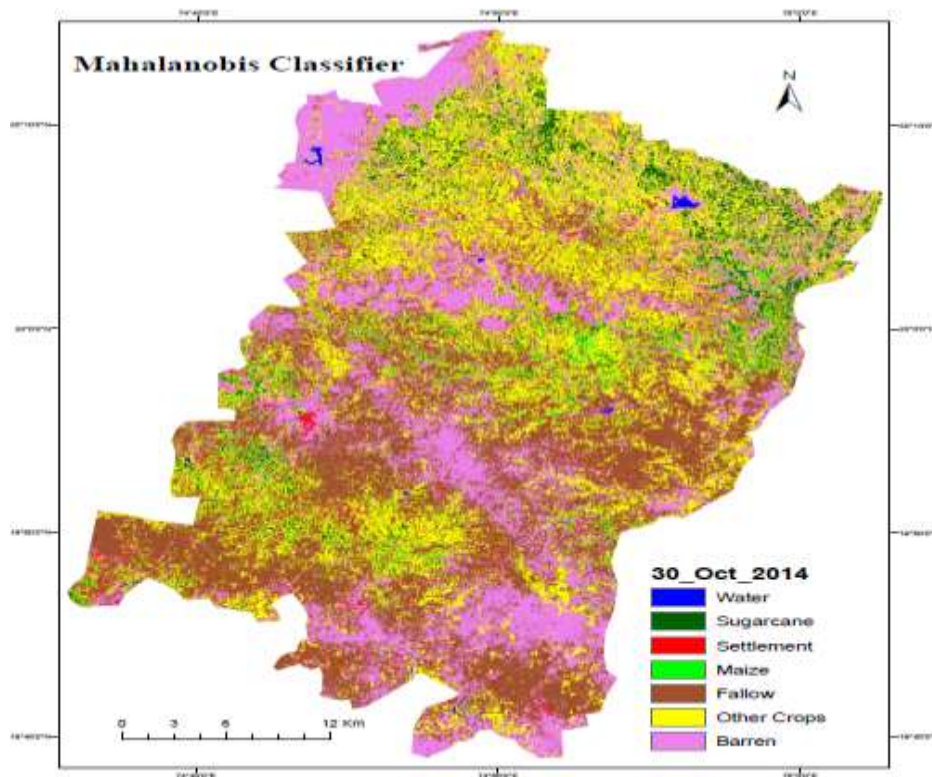


Figure 9: Classified LULC Map using Mahalanobis Classifier 30 Oct 2020

30-Oct-2020 Mahalanobis classifier LULC	
Hector	
Class Names	Area in Hector
Water	351.697
Cotton	10529.1
Onion	3332.32
Fellow Land	53510
Barren Land	40118.7
Settlement	2026.13
Crop	49605.5
Total Area	159473.44

Table 5: LULC Area covered in Hector using Mahalanobis Classifier

Graph 3: LULC Area covered using Mahalanobis Classifier

Table 2 to 3 shows the summary of the results of the different classification methods used during the research. From this case study we can suggest that the post classification method gives better results than MLC and mahalanobies classifier. On the other hand, if we compare MLC with Mahalanobies then we can say that the Mahalanobies classifier is better choice if the image consists of spectrally overlapping classes. MLC is also a good and easy method to incorporate ancillary layers to improve classification accuracy. It is also good choice if training samples are not normally distributed. A pretty important part of the study is that MLC (Maximum likelihood classifier) which was applied to the final result. The purpose was to smooth and try to reduce the mixed pixel problems on the classified images. As a visualized

result shows more accurate estimated crop areas as per resultant accuracy gave more than the others.

ACCURACY ASSESMENT

we have included final classification results and an alternative method of accuracy assessment as well as detailed discussion about the results achieved. As it has mentioned before, a generalization techniques was adopted for all the classification results. Sometimes a classified result contains data that is erroneous or irrelevant to the analysis at hand or is more detailed than it requires, For instance, if a small isolated areas that are misclassified. We have performed various techniques to overcome this problem. The overall accuracy result is shown at the end of the chapter.

Image Classification & Analysis

The results of the image classification are obtained using four different supervised classifiers. The accuracy of the classified images was assessed with error matrices, percentage of producer, user’s accuracies and Kappa statistics. The results of this study show that, classification of remotely sensed imagery gives valuable information in the agricultural yield. The crop acreage estimation analysis is done by Maximum Likelihood, Mahalanobis Distance Classifier, Knowledge Classifier and Fuzzy Classifier approaches [1][2][3][4]. The classification is done through assigning seven classes such as Cotton, Onion, Other Crops, Barren Land, Fellow Land, Settlement and Water. The ground truth points were collected through *GPS*Receiver Device. The figure 6 shows photograph of *GPS* receiver [5][6].



Figure 10: GPS Receiver

For the image classification and analysis we have used *LANDSAT 8 OLI* images. The original images are shown in figure 7 and 8.

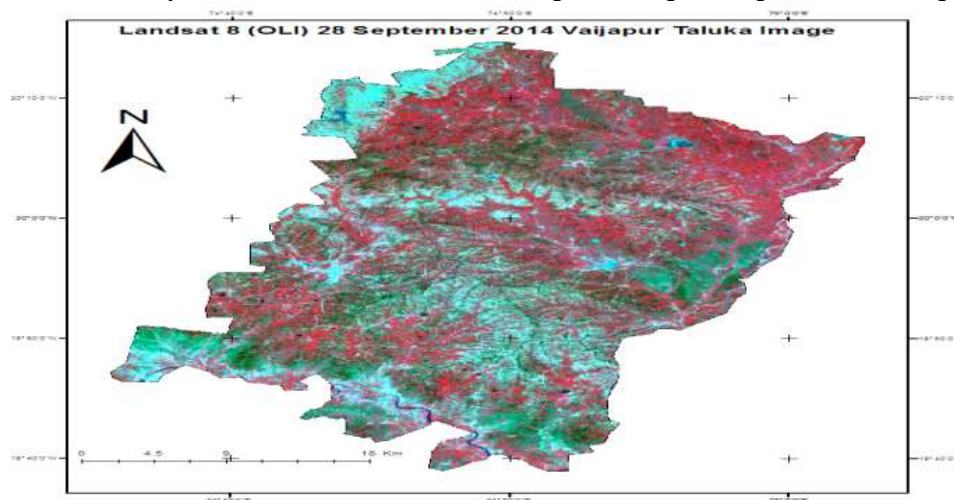


Figure 11: Landsat 8 band (OLI) FCC image of 28 September 2020

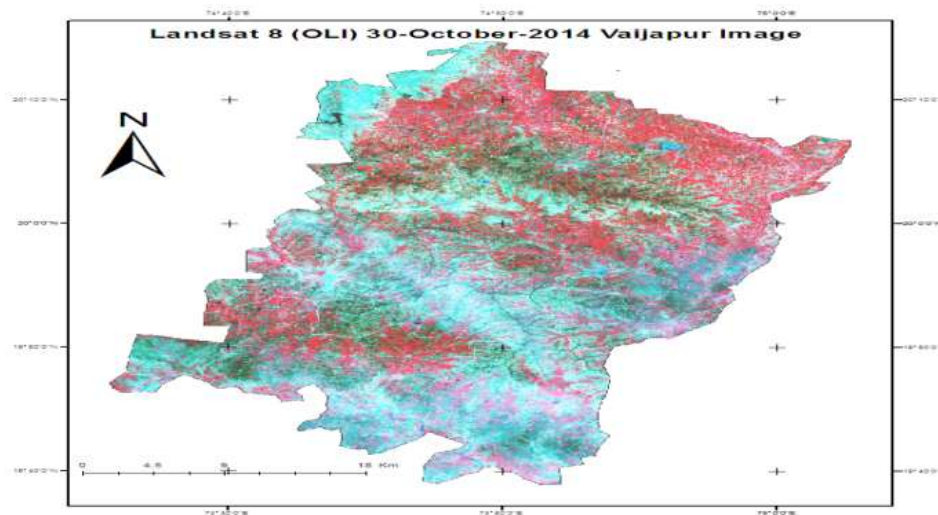


Figure 12: Landsat 8 band (OLI) FCC image of 30 October 2020

CONCLUSIONS

The study carried out in this thesis potential of remote sensing sensor approach in the temporal analysis studies. Study demonstrated that to estimated actual area covered by the crop specifically Cotton and Onion from Landsat 8 band OLI satellite data, and comparing the results achieved by the maximum likelihood, Mahalanobis classifier. It is demonstrated that MLC classifier is more suitable for temporal images from finding the specific crop.

The Landsat 8 Band OLI a new generation of Landsat series satellites to supply data for the worldwide Community of researchers and educators. To assess the data performance, Landsat 8 OLI was also investigates for land cover classification (identification of specific crop) in Vaijapur Taluka, Aurangabad Maharashtra. The Landsat data performance was good especially in the NIR band of the OLI data, where a clear improvement was found.

The result about crop cover area in hecter using Maximum Likelihood are 9283.41 ha Cotton and 21140.3 ha Onion in the month September. The areas of 10989.8 ha Cotton and 3687.12 ha with Onion for the month of October have been occupied from overall 159473.4ha of Vaijapur geographical area. In the month of October Cotton area was slightly increased as per month of September. As per onion the maximum area was harvested during the month of October that's way the occupied area was shown decreased.

The study was time bound and of a shorter duration, only a few areas in the temporal discrimination of crops could be actively explored. Since the remote sensing data used in this study was of the period 28-Sept, 30-Oct-2020 and field work was conducted as same time. It was mainly done based on two classification techniques and ancillary information about crop growth pattern and the agricultural land survey record of the area. The hypothesis test shows that the Maximum likelihood, Mahalanobis Distance Classifier, gave promising results for estimating smallest area count of crop area for Vaijapur Taluka using Landsat 8 OLI imagery.

ACKNOWLEDGMENTS

We believe that a research study is a teamwork, which requires cooperation and support in its every stage. In the present study we have received contribution from many people. First of all, we would like to thanks University Grant Commission for sanctioning STRIDE Scheme to our college under which we got funding for this minor research project.

We express our deep sense of gratitude and respect to MLC Hon'ble Satish Chavan, Secretary, MSP Mandal, Aurangabad, Hon'ble Shri Appasaheb Patil, Head, College Development Committee and all the members of the Committee.

It is pleasure to thanks the Asst.Prof.G.N.Pathare, Asst.Prof. A.V.Gaikwad, Asst.Prof.S.B.Shinde, Asst.Prof. S.S.Tribhuvan, Asst.Prof. A.R.Aher, Asst.Prof. M.V.Raut and non-teaching staff for their help and kind co-operation during the course of this work.

We express our deep sense of gratitude and respect to Hon. Principal Sir Dr.S.N.Thore, STRIDE Coordinator and Vice Principal Dr.S.D.Pardeshi, and Vice Principal Dr.D.S.Salunke for giving this opportunity to do research and elaborate us.

And, finally we are also grateful to our family members for their patience, love, encouragement and sacrifices.

REFERENCES

- [1] Rachel Barrett, Paul Crowther, Rowland Laurence, Ross Lincolne, "Agricultural Crop Identification Using Spot and Landsat Images in Tasmania", International Archives of Photogrammetry and Remote Sensing. Vol. XXXIII, Part B7. Amsterdam 2000.
- [2] Dadhwal, V.K., Singh, R., Dutta P. S. & Parihar, J. S. "Remote sensing based crop inventory: A review of Indian experience", 0564-3295, International Society for Tropical Ecology, *Tropical Ecology* 43(1): 107-122, 2002.
- [3] Impact of ICTs on Agriculture growth and Development Case Studies from Karnataka Region.
- [4] Role of ICT in Crop management .
- [5] Paul J. Pinter, Jr., Jerry L. Hatfield, James S. Schepers, Edward M. Barnes, M. Susan Moran, Craig S.T, Daughtry, and Dan R. Upchurch, "Remote Sensing for Crop Management", Photogrammetric Engineering & Remote Sensing Vol.69, No.6, June 2003.
- [6] Implementation of artificial intelligence in agriculture for optimisation of irrigation and application of pesticides and herbicides.
- [7] Jay Gao, Hulfen Chen, YIng Zhang, and Yong Zha, "Knowledge Based Approaches to Accurate Mapping of Mangroves from Satellite Data", Photogrammetric Engineering & Remote Sensing , November 2004.
- [8] Impact of ICTs on Agriculture growth and Development Case Studies from Karnataka Region.
- [9] <http://aims.fao.org/information-and-communication-technologies-ict>.
- [10] e-Agriculture 10 year Review Report. Implementation of the World Summit on Information Society/WSIS, 2015.
- [11] <https://www.gktoday.in/topic/application-of-ict-in-agriculture-in-india>.

- [12] S.P. Vyas, M.P. Oza and Dadhwal, “Multi crop Separability Study of Rabi Crops using Multi- Temporal Satellite Data”, Photonirvachak, Journal of the India Society of Remote Sensing Vol.33, No.1, 2005.
- [13] R. Balaghi, B. Tychon, H. Eereas, M. Jlibene, “Crop Yield Forecast with Noaa and Spot Vegetation Data Morocco”, ISPRO WG VIII/10 Workshop 2006, Remote Sensing Support to crop Yield Forecast and Area Estimates, 2006.
- [14] D. LU, Q. Weng, “A survey of Image Classification methods and techniques for improving classification performance”, International Journal of Remote Sensing, Vol.28, No.5, 10 March 2007.
- [15] D.R. Rajak, M.P. Oza, N.Bhagia and V.K.Dadhwal, “Monitoring Cropping Patterns Changes using Multi Temporal WiFs Data”, Geocarto International, 2008.
- [16] Mr.Sandip Thorat Dept.of CS&IT DrBAM University Aurangabd, “Estimation of Crop and Forest Areas using Expert System based Knowledge Classifier Approach for Aurangabad District ” International Journal of Computer Applications (0975 – 8887) Volume 121 – No.23, July 2015.

Copyright & License:



© Authors retain the copyright of this article. This work is published under the Creative Commons Attribution 4.0 International License (CC BY 4.0), permitting unrestricted use, distribution, and reproduction in any medium, provided the original work is properly cited.