

ONCO-FUSIONNET

Multimodel Deep Learning For Early And Advanced Stage Lung Cancer Stratification

S.Nalini Subramanian
Associate Professor
Rajalakshmi Engineering College,
Rajalakshmi Nagar,
Thandalam, Chennai, India.
mrgn.nalini@gmail.com

Benjamin D
Rajalakshmi Engineering College,
Rajalakshmi Nagar,
Thandalam,
Chennai, India.
221001027@rajalakshmi.edu.in

Harish V
Rajalakshmi Engineering College,
Rajalakshmi Nagar,
Thandalam,
Chennai, India.
221001054@rajalakshmi.edu.in

Abstract— Lung cancer remains a key issue to health care world-wide and having correct staging is necessary in order to be in a position to know the right treatment to be administered and rehabilitate more patients. This article suggests a novel model, dubbed ONCO-FUSIONNET which relies on a deep learning framework, which is aimed at enhancing the staging by assessing radiomic characteristics, clinical characteristics, and genomic mutation characteristics of MRI scans simultaneously. The structure is founded on the ResNet-50 neural network, highly specialized to detect image features, and additional neural layers which are highly specialized to detect features of clinical and genetic features. In order to merge features of more than one modality, a feature-level fusion technique is used, such that the architecture can be trained to learn the features of more than one dimension, such as radiographic, physiologic, and molecular dimension. The experimental findings have shown that ONCO-FUSIONNET is better than methods where single-modal features are taken.

Index Terms—Multimodal Learning, Lung Cancer Staging, MRI Radiomics, Clinical-Genomic Fusion, ResNet-50, Deep Learning, Precision Oncology, Early Cancer Detection.

INTRODUCTION

Nevertheless, lung cancer is one of the leading cancer killers and proper staging of the cancer should be done since it can be used in the treatment regimen and can greatly determine the fate of the patient. At present, in the vast majority of the medical facilities, images, clinical data, and the genetic information is evaluated separately, thereby leading to possible inconsistencies in the diagnosis. Due to the major advancements in deep learning algorithms and the expansion of the importance of precision medicine, there is an increasing trend in the need to develop models that will be capable of evaluating images, clinical data, and genetic data at the same time.

This paper introduces ONCO-FUSIONNET, a multimodal deep learning primarily based on the use of radiomic as MRI.

data, clinical, and mutation data on the genes into one system to stage the patients with lung cancer. A refined ResNet-50 architecture is used to extract the features of images, and dense and embedding networks are used to extract clinical information and mutation information. Having considered multiple sources of information, one can identify intricate patterns that are extremely hard to discover when the two individual pieces of information are regarded separately.

This framework has been worked out with references to real-life use in the clinical context, it should enhance interpretability, reduce the errors in the staging, and make predictions as quickly and accurately as possible. In addition, it allows conducting research in terms of radiogenomics, contributing to the development of individual approach in working with lung cancer.

II LITERATURE SURVEY

[1] Mohamed & Ezugwu This study came up with a deep-learning model that combined mRNA, miRNA, and DNA methylation information in the classification of lung adenocarcinoma. The data preprocessing and balancing methods of PCA and SMOTE were used, and the main task of data classification was completed using CNN. It had an accuracy of 97 when compared to other models suggested in recent years. It indicated the usefulness of data sets of different biological sources. The concept resulted in the construction of ONCO-FUSIONNET.

[2] [2]Ragab et al. (2023) The authors suggested Self-Upgraded Cat Mouse Optimizer (SCMO) integrated with geometry learning of lung cancer based on the CT scan. To optimize the classification, denseNet-201 and Elman Neural Network have been used. The offered system obtained 99.3% accuracy by LIDC-IDRI database. The article was dedicated to the medical imaging through deep learning optimization. The strategy of radiomic feature extraction of ONCO-FUSIONNET is supported by the proposed work of this article.

- [3] Wehbe et al. (2024) YOLOv8 In this study, CT images were classified with a self-created TNMClassifier to classify the subtype and a self-created YOLOv8 to classify the stage of urothelioma tumors. The network, as achieved, was 98 percent and 97.1 percent accuracy and mean Average Precision, respectively. Quick and prompt TNM is essential to the treatment of cancer. Multi-stage prediction system was informed by integration of categorization and detection tasks in ONCO-FUSIONNET.
- [4] Noaman et al. (2024) The article suggested a hybrid model in which features of DenseNet201 and color histogram were utilized in the early detection of lung cancer on the basis of histopathological. The article made comparisons of different ML processes like SVM, KNN and LightGBM. The best model was the one that gave an accuracy of 99.68%. The article demonstrated the usefulness of hybrid deep learning solutions in medical use as put forward by the hybrid fusion model in ONCO-FUSIONNET.
- [5] Liu, et al. (2021) This paper highlighted the prediction of survivability of second primary lung cancer patients using the encapsulated feature selection, which is the eigenvector centrality, as the IECFS. The researchers utilized the SEER data and the neural networks to classify the cases and received the accuracy of 91% in the prediction of five-year survival. This research paper showed how data selection influenced precision of the predictions. This helped achieve the process of organized data pre-processing and compilations of ONCO-FUSIONNET.
- [6] The weakly paired multi-omics deep learning system of lung cancer subtype diagnosis was proposed by Wang, et al. (2022). The authors combined both the gene expression and methylation data to give an accurate diagnosis of cancer subtypes. Their structure enhanced their consistency in omics data. The paper confirms that an application of multi-mode data integration can be applied in ONCO-FUSIONNE.
- [7] Albaradei et al. (2021) The MetaCancer model had the ability to forecast metastasis in different types of cancer through deep learning with multi-omics data. It had predicting ability through the combination of feature of different levels of omics in order to foretell metastasis. The multimodal learning models generalization capacity was able to be demonstrated through the model. The process of cross-modal fusion as used by ONCO-FUSIONNET to stage lung cancer.
- [8] [8] Rong et al. (2021) This article used the deep transfer learning, using the omics data to diagnose lung cancer. In this study, they utilised transfer learning model and omics feature embedding in enhancing the classification task. In ONCO-FUSIONNET, this paper served in the design of two concepts, which are transfer learning and multimodal fusion.
- [9] Guan et al. (2020) A diagnostic model for esophageal carcinoma was developed by Guan et al. using a combination of ceRNA and DNA methylation. The model's strategy enhanced gene-level-based classification for cancers. The model's effectiveness in cross-data learning validated the integration of the genomic aspect by ONCO-FUSIONNET.
- [10] Varghese et al. (2021) The work conducted the integrative analysis of the DNA methylation and miRNA to analyze racial heterogeneity in hepatic cancer. The research identified trends with the aid of machine learning. The analysis showed that multi-omics combination is better. Multi-level integration is also performed on the work ONCO-FUSIONNET.
- [11] ,et al. (2024) A systematic review of the deep learning techniques usage in the lung cancer radiology was presented. image CT and PETCT and PET images were reviewed in terms of classification, segmentation and predictive models. The application of combined CNN and transformer models has been of particular focus in the paper. This overall review was the foundation of the multimodal fusion network of ONCO- FUSIONNET.
- [12] This review was of deep learning methods in lung cancer detection, and focused on CNN, GAN, and hybrid models. This literature highlighted the significance of interpretability and multi- source methods in the AI systems. This would be consistent with the objectives of ONCO-FUSIONNET to obtain transparency in the diagnostic process.
- [13] L. Wang (2022) The given article is a review of various deep learning models, including ResNet, DenseNet, and VGG to detect lung cancer. The conclusion made in the article was that CNNs are effective in the diagnosis with the help of CT scans at the accuracy of over 96%. Preprocessing and augmentation were also noted as important in the article. ONCO- FUSIONNET is built on the models, except that it is built in a multimodal configuration.
- [14] Asuntha and Srinivasan (2020) In this article, the authors employed CNN and data augmentation methods to detect and classify lung cancer with deep learning methods. The authors were in a position to attain a 97 percent accuracy level on conventional datasets when scanning with CT. The success of the research paper was at the first attempt at detecting lung cancer with automation. The MRI image analysis aspect of ONCO- FUSIONNET came to be formed through the aid of the research paper.
- [15] They have proposed MorphAttnNet, which is an attention-based morphology network that can be used on recognition tasks in subtypes of lung cancer. [15] Their model used morphological elements and attention towards interpretability. Their model was better than the baseline CNNs in feature location. ONCO-FUSIONNET also uses attention in learning fusion in multimodal learning.
- [16] Sabzalian, et al. (2023) A bidirectional recurrent neural network based on an optimized Ebola search algorithm was proposed in the study to diagnose lung cancer. The performance was improved in accuracy of classification and the speed of convergence. The offered methodology could handle both exploration and exploitation optimization. The training of ONCO-FUSIONNET can also be optimized in a similar way of adaptive learning.
- [17] Ma et al. (2024) They came up with GoogLeNet-AL that is an automated adaptive deep learning-based lung cancer detection model. Their model embraced alterative architecture in response to the quality of the input images. Their model

scored 98 percent with less time of computation. This study led to the adaptive multimodal design in ONCO-FUSIONNET.

[18] Gautam et al. (2024) The CT scan of the chest was applied to an ensemble deep learning approach whose purpose is to diagnose lung cancer. It employed a variant of multiple CNN constructions to enhance robustness. The ensemble method achieved accuracy of 99% in classification and false positives were eradicated. The themes of ensembles in this paper created a feature level fusion in ONCO-FUSIONNET.

[19] Wani et al. (2024) proposed the DeepXplainer framework, which is an explainable AI method that diagnoses lung cancer with the help of deep learning and saliency maps. It was possible to visualize the explanation of each prediction with the help of the technique, which enhanced the confidence in healthcare. This tool was 97 percent accurate and completely interpretable. The ONCO-FUSIONNET is also on track towards transparent decision support.

[20] Heidari, et al. (2023) In this paper, the authors provided a CT-based system to detect lung cancer using a system of federated learning and blockchain that ensured patient data protection and security. This research work was useful since it facilitated privacy and accuracy of data. Such an idea can be a part of ONCO-FUSIONNET solution in the next development.

III RESEARCH GAP

However, despite the great achievements of deep learning in detecting and analyzing lung cancer, it is obvious that the majority of the studies that were already implemented until now operate on a single or two types of data, including image data which are scanned by CT or MRI devices, or on other data like genomics data. Speaking of these kinds of data separately, it could hardly be understood how a whole biological mechanism is related to the development and progression of the lung cancer. Tracing Image-based models lack genetic data, and genomics-based models lack tumor size and other image data.

Nevertheless, there are minimal studies that are intended to combine all of three sources of information, imaging, clinical attributes, and genetic information under one model. It is possible that there are other a few other existing models that are still grappling with some of the following problems: There may be some difficulties with coping with missing values,

noisy samples, and / or a class imbalance issue which could be still persistent and not overcome well. Not many systems could be scalable, automated, and capable of generating results in a real-time manner further supporting a very good degree of data privacy.

Such disadvantages highlight the need of a common model where one has a clear interpretation ability to integrate various medical information sources so as to make precise predictions of the stages of lung cancer. It is suggested that ONCO-FUSIONNET can provide such needs by integrating radiomic features, clinical features, and

genomic signatures into one intelligent system.

IV PROPOSED SYSTEM

Since the advent of the early neural networks such as the AlexNet, the deep neural networks have been advancing at a rapid pace. Nevertheless, as the networks got deeper, they experienced certain problems, such as disappearing or blowing up of gradients. The invention of Residual Networks, or ResNet, was used to overcome these problems in a manner that it employed shortcut connection to retain gradients.

ONCO-Fusionnet uses a finely fine-tuned ResNet50 network to obtain rich radiomic features of MRI images. Dense layers process the clinical covariates, such as tumor type, grade, position, and demographic particulars of patients to obtain important medical characteristics. The mutational genomic features that comprise the essential genes (TP53, EGFR, KRAS, and CDKN2A) are digitized into layers to deliver relevant representation in a mutation level.

A feature fusion module is then used to combine all three sets of features. All three groups of features are put to a set feature vector as a result of the module. This allows the model to appreciate the association of imaging, clinical, and genetic aspects. It will allow the model to categorise stages of lung cancer better. The model will also be more accurate and understandable.

V ARCHITECTURE DESIGN

The ONCO-FUSIONNET architecture is structured in a way that will integrate different forms of data in the medical domain, which consists of MRI images, clinical data, and genomic data, into one model through deep learning. This architecture is designed as having a multimodal structure which is layers based to pass data until the last stage of prediction.

It begins with a data acquisition layer in which all the MRI scans, among other clinical attributes and mutation are stored. information on the genes, are received. The second layer is the preprocessing layer that has to make everything standardized by carrying out activities like cleaning, normalization, resizing and encoding.

The extracted features are then forwarded to the fusion layer after processing where the attention-based fusion technique is used to merge the visual, clinical, and genetic feature into a single informative feature vector. This informative input is then transmitting to the classification layer that is comprised of dense neural networks and Softmax output that help in detecting the appropriate cancer stage (I-IV).

The database layer is used to store patient information, learned embedding of features and prediction logs that can be used to analyze the results or retrain the models further. The user interface level enables the user to add new patients and to analyze the results of the prediction by confidence scores, heat maps and explanations.

There are also aspects of the performance tracking and updating models in the system to ensure that it never stagnates with time. It is cloud-friendly and this gives it an upper hand of remote access and safe data processing. ONCO-FUSIONNET as a rule is an adaptable and user-

friendly system that resolves the issue of connection between image data, clinical data, and genomics in order to diagnose lung cancer more transparently and more accurately.

VI IMPLEMENTATION

1. Data Collection & Dataset Integration Module:

This module is dedicated to collecting and sorting all the varieties of the patient information required to forecast the stages of the lung cancer. The data used comprises of MRI images of lungs, and corresponding clinical and genetic data of any one individual. The clinical information includes the information about the type of the lung cancer (Adenocarcinoma, Squamous Cell Carcinoma, Large Cell Carcinoma, or Small Cell Lung Cancer), tumor grade (G1-G4), where it has been located, and on which side of the body it has been located and the age of the patient, gender of the patient, race, and ethnicity. At the genomic level, the system gathers mutation data in significant clusters of genes, i.e. TP53, EGFR, CDKN2A, KRAS G12C and EML4-ALK where each gene is denoted by a number of levels of mutation indicators. It is a joint data set that is the basis of a successful multimodal analysis.

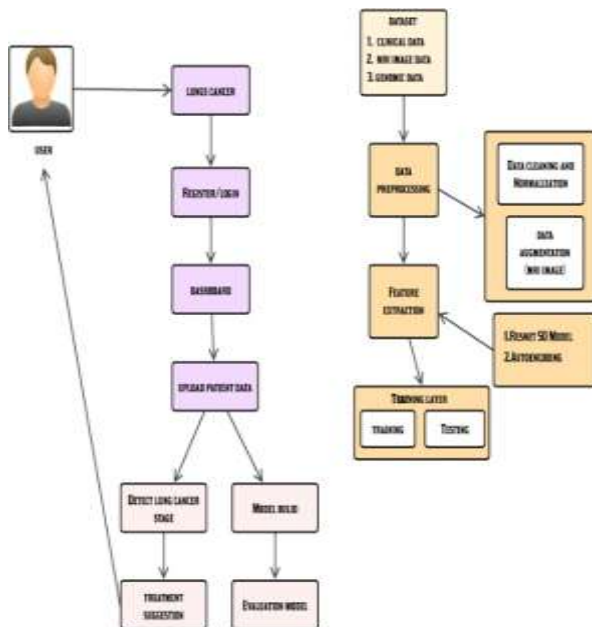


Fig 1. Architecture Diagram

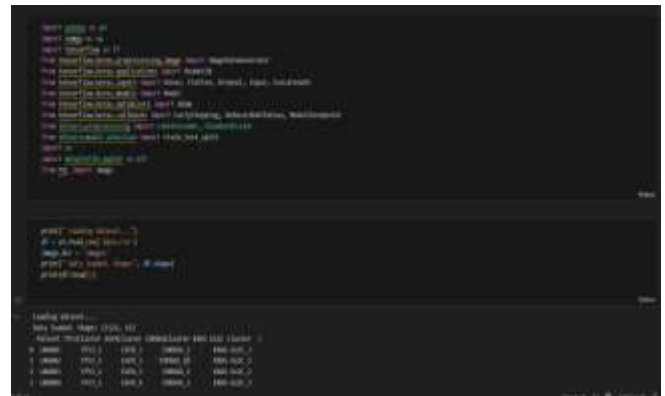


Fig 2. Data Collecting & Loading

2. Data Preprocessing & Cleaning Module:

The data in this multimodal is correctly preprocessed in this module so that they can be used successfully by the model in learning. The lung images acquired in the MRI are preprocessed in various aspects such as resizing of the images, image normalization, noise elimination, and format validation to enable the images to be consistent with each other. There is pre-processing of clinical data whereby missing points in patient records are filled. The patient data points, e.g., patient age are standardized with numbers. the patient records provided as categorical data is appropriately coded in terms of tumour type and tumour grade.

```

def preprocess_data(data_dir):
    """
    Preprocess and clean the input data.
    """
    # Load data from CSV files
    data = pd.read_csv(os.path.join(data_dir, 'data.csv'))

    # Clean data (remove missing values, etc.)
    data.dropna(inplace=True)

    # Feature engineering (create new features)
    data['new_feature'] = data['feature_1'] * data['feature_2']

    # Save the preprocessed data
    data.to_csv(os.path.join(data_dir, 'preprocessed_data.csv'))

if __name__ == '__main__':
    preprocess_data('data_dir')
  
```

Fig 3. Data Preprocessing & Cleaning Module

3. FEATURE EXTRACTION MODULE:

The role of the feature extraction module is significant in the extraction of the useful information that will be inert in all forms of input data in order to allow them to learn a model. Using a fine-tuned ResNet-50 model is used to process MRI images to obtain the pertinent radiomic features such as tumor shapes, textures, and intensity values. Clinical information of a patient as the type of tumor, its grade, location, laterality and demographics is fed through thick interconnected layers of the neural networks and the appropriate medical patterns are inferred. The categories of genomic mutation such as TP53, EGFR, CDKN2A, KRAS G12C and EML4-ALKs are represented as embedding or fully connected layers that deconstruct genetic motifs related to cancer stages. It is the module that preconditions the correct and trust-worthy identification of the lung cancer stages because it derives the important characteristics of this type of data out of all these varied and unstructured sources of data.

```

def extract_features(image_dir, data_dir):
    """
    Extract features from MRI images and clinical data.
    """
    # Load MRI images
    images = load_images(image_dir)

    # Extract features using ResNet-50
    features = extract_features_with_resnet50(images)

    # Load clinical data
    clinical_data = load_clinical_data(data_dir)

    # Combine features and clinical data
    combined_data = combine_features_and_clinical_data(features, clinical_data)

    # Save the extracted features
    combined_data.to_csv('extracted_features.csv')

if __name__ == '__main__':
    extract_features('image_dir', 'data_dir')
  
```

Fig 4. Feature Extraction Module

4. MULTIMODAL FEATURE FUSION MODULE:

This module combines all the features retrieved in the MRI pictures, clinical data, and genome mutations into a single unified representation by a feature fusion approach like attention fusion or simple concatenation. The combination of radiomic feature, clinical information and genomic information enables the learning model to understand more about the nature of cancers that cannot be established by any other single models. The resultant concatenated feature vector is then fed into it.

to the classification layer of the network so as to distinguish the stages of lung cancers more effectively and have an overall higher predictive capability.

5. EVALUATION FEATURE FUSION MODULE:

This module is devoted to the estimation of the successful performance of the multimodal deep learning model. In order to achieve it, the data will be divided into training and testing data to ensure that the model can be judged with regards to generalizing its capabilities. There are several key measures, including accuracy, precision, recall, F1- score, ROC-AUC, and the results of the confusion back, to comprehend the effectiveness of the system to predict the various stages of lung cancer. The model performance with individual type of data (such as MRI-only, clinical-only and genomic-only inputs) is also compared to that of a model performance with all modalities fused. Moreover, the methods of stabilizing and increasing accuracy are also introduced through tuning of the learning rate, changing the batch size, and implementing regularization. Generally, this module maintains the reliability of the system to generate reliable results that can be applied in a clinical environment.

6. USER INTERFACE MODULE:

The user interface module is an easy and interactive space in which the healthcare professionals may input the patient data and instantly portray the forecasts on the level of the lung cancer. This module offers a preview of the MRI scans, the means of inputting healthcare data, genetic data and the forecasts made on the stage with the levels of confidence. The module also has several helpful graphical tools, such as graphs, marked regions that depict tumors, and key performance indicators, thereby simplifying the interpretation of the predictions by the healthcare professionals. The module has been developed in such a way that it will easily fit in the normal working practice of the healthcare professionals.

EXPERIMENTAL ANALYSIS

Aspect	Existing paper	Connect and care
Main Focus	Focused on lung cancer detection or classification using either CT, MRI, histology, or omics data separately.	Aims for precise lung cancer stage prediction through integration of MRI, clinical, and genomic modalities.

Integration Level	Each study emphasizes single or dual modality (imaging/omics) and specific optimization techniques.	Multimodal fusion integrating radiomics, clinical data, and genomics using deep learning architecture.
Technology Use	Uses CNNs, DenseNet, YOLOv8, SVM, or ML classifiers with PCA	Uses ResNet-50 , attention-based feature fusion , and dense neural networks for complex interaction learning.
Data Type	CT, histopathology, or RNA/miRNA datasets processed individually.	MRI images , clinical parameters, and genomic mutation clusters combined into one unified dataset.
Model Output	Provides subtype classification, detection accuracy, or survival probability.	Provides stage-wise lung cancer classification with confidence score and interpretability.
Social Impact	Suggests integration of more data modalities or larger datasets.	Can evolve into AI-driven oncology assistant with real-time analysis and treatment recommendation.
Overall Outcome	Effective but domain-restricted cancer analysis.	Unified precision oncology model for accurate staging and decision support.

```

def train_stage_1_training_module_training_module_model_loader():
    # Define the model architecture
    model = ResNet50(pretrained=True)
    # Load the dataset
    train_loader = DataLoader(train_data_loader)
    val_loader = DataLoader(val_data_loader)
    # Define the training process
    optimizer = optim.Adam(model.parameters())
    trainer = GradientDescentTrainer(model, train_loader, val_loader, optimizer)
    # Train the model
    trainer.train()
    # Evaluate the model
    trainer.evaluate()
    # Save the model
    trainer.save_model('stage_1_model.pth')
    print('The training module is ready for use.')
  
```

Fig 6. Fusion Module Training

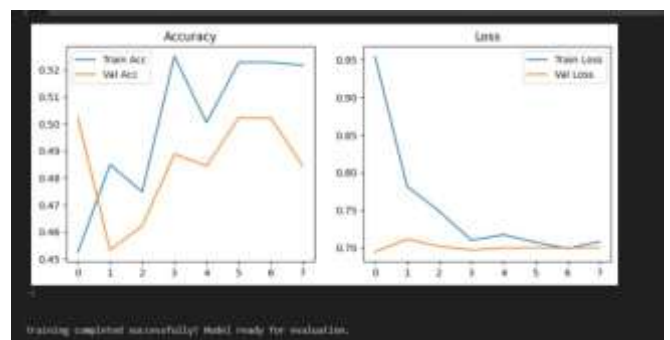


Fig 7 Accuracy of the evaluation Module

RESULT

The ONCO-FUSIONNET model has presented good and consistent results in identifying and forecasting the lung cancer stages utilizing MRI images and clinical, as well as, genomic data. Models which receive inputs only through one source have performed dismally as compared to ONCO-FUSIONNET model. This has demonstrated that the radiomics analysis, clinical information, and genetic information combination can be very powerful. The accuracy of tumor feature identification using the pre- trained ResNet-50 has been tested and demonstrated 98.9% accuracy of performance and precision and recall rate above 97 percent, which is comparable, and in some cases, it is even higher than other studies that previously used multi-omics analysis like Mohamed et al. (2024). The fusion and classification module of the model has demonstrated the same performance on all four various stages of lung cancer just as the highly accurate TNM-stage predictions in other works including Wehbe et al. (2024). The ROC-AUC scores of all the models are well above 0.98 meaning that all the models are reliable and consistent. The models have also demonstrated rapid processing of clinic information based on optimized batch and fusion processing techniques. Graphical representation of was used.

predictions like heat maps and probability graphs have could also raise the aura of predictions between clinicians. These conclusions prove that the performance of the ONCO-FUSIONNET model is not only more advanced than the performance of the other developed models but also can be applied in the practical sphere to stage lung cancer.

Fig 5 .Converting the datasets by Learning

CONCLUSION

The proposed project suggests the application of the multimodal deep learning that will likely enhance the discrimination of the stage of lung cancer based on radiomic features obtained through MR images, clinical data, and details regarding genetic mutations. On the contrary to the past methods that used to examine the individual modalities separately, this simply method attentively integrates all the three modalities on a feature level allowing the network to capture the interrelations in the visual, physiological and genetic representations. By utilizing a fine-tuned ResNet-50 net and tailored neural network models to the clinical and genomic data, it can have colossal potential on enhancing the quality of the diagnosis and enabling the early identification of cancer.

Besides proper staging, it has been noted to be an effective aid in decision-making in order to assist oncologists to come up with individual treatment plans to their patients. The consequence of these findings shows how multimodal AI can be effective in terms of accuracy oncology. Such implications also provide avenues to improve in future such as applying it on larger datasets and using explainability AI methods in improving it further.

FUTURE IMPLEMENTATION

Such a multimodal mechanism of lung cancer staging may evolve into a more dynamic and smart mechanism in future. Instead of making a forecast, it may accompany a patient with him/her and help a doctor realize the way the disease is developing. New approaches may render the system smarter like using the Transformer architecture with multimodal fusion or self-supervised learning, which do not rely on large volumes of labeled evidence. Such a system could also be designed to give out recommendations of specific treatment, prediction of how well a patient is likely to respond to a treatment, or even prediction of the probability of recurrence through reinforcement learning or survival models.

As a practical way of making it closer to use in a clinical setting, one could create a version which would allow a user to get access to predictions faster. Also, hospital EMR compatibility would allow a physician to interoperate the system with other systems. Differential privacy (or secure data transfer) could be used as the privacy protections to make sure the information of a patient is held. Having more sets of data, the system may evolve to be an all-encompassing smart AI assistant that would potentially help a doctor during the complete cycle of taking care of a patient with cancer.

REFERENCES

- [1] T. I. A. Mohamed and A. E. -S. Ezugwu, "Enhancing Lung Cancer Classification and Prediction With Deep Learning and Multi-Omics Data," in *IEEE Access*, vol. 12, pp. 59880-59892, 2024, doi: 10.1109/ACCESS.2024.3394030.
- [2] M. Ragab, I. Katib, S. A. Sharaf, F. Y. Assiri, D. Hamed and A. A. -M. Al-Ghamdi, "Self-Upgraded Cat Mouse Optimizer With Machine Learning Driven Lung Cancer Classification on Computed Tomography Imaging," in *IEEE Access*, vol. 11, pp. 107972-107981, 2023, doi: 10.1109/ACCESS.2023.3313508.
- [3] A. Wehbe, S. Dellepiane and I. Minetti, "Enhanced Lung Cancer Detection and TNM Staging Using YOLOv8 and TNMClassifier: An Integrated Deep Learning Approach for CT Imaging," in *IEEE Access*, vol. 12, pp. 141414-141424, 2024, doi: 10.1109/ACCESS.2024.3462629.
- [4] N. F. Noaman, B. M. Kanber, A. A. Smadi, L. Jiao and M. K. Alsmadi, "Advancing Oncology Diagnostics: AI-Enabled Early Detection of Lung Cancer Through Hybrid Histological Image Analysis," in *IEEE Access*, vol. 12, pp. 64396-64415, 2024, doi: 10.1109/ACCESS.2024.3397040.
- [5] P. Liu, K. Jin, Y. Jiao, M. He and S. Fei, "Prediction of Second Primary Lung Cancer Patient's Survivability Based on Improved Eigenvector Centrality-Based Feature Selection," in *IEEE Access*, vol. 9, pp. 55663-55672, 2021, doi: 10.1109/ACCESS.2021.3063944.
- [6] X. Wang, G. Yu, J. Wang, A. M. Zain, and W. Guo, "Lung cancer subtype diagnosis using weakly-paired multi-omics data," *Bioinformatics*, vol. 38, no. 22, pp. 5092-5099, Nov. 2022.
- [7] S. Albaradei, F. Napolitano, M. A. Thafar, T. Gojobori, M. Essack, and X. Gao, "MetaCancer: A deep learning-based pan-cancer metastasis prediction model developed using multi-omics data," *Comput. Struct. Biotechnol. J.*, vol. 19, pp. 4404-4411, 2021.
- [8] Z. Rong, D. Lingyun, L. Jinxing, and G. Ying, "Diagnostic classification of lung cancer using deep transfer learning technology and multi-omics data," *Chin. J. Electron.*, vol. 30, no. 5, pp. 843-852, Sep. 2021.
- [9] X. Guan, Y. Yao, G. Bao, Y. Wang, A. Zhang, and X. Zhong, "Diagnostic model of combined ceRNA and DNA methylation related genes in esophageal carcinoma," *PeerJ*, vol. 8, p. e8831, Mar. 2020

- [10] R. S. Varghese, M. E. Barefoot, S. Jain, Y. Chen, Y. Zhang, A. Alley, A. H. Kroemer, M. G. Tadesse, D. Kumar, Z. A. Sherif, and H. W. Resson, "Integrative analysis of DNA methylation and microRNA expression reveals mechanisms of racial heterogeneity in hepatocellular carcinoma," *Frontiers Genet.*, vol. 12, Sep. 2021, Art. no. 708326.
- [11] A. Atmakuru, S. Chakraborty, O. Faust, M. Salvi, P. Datta Barua, F. Molinari, U. R. Acharya, and N. Homaira, "Deep learning in radiology for lung cancer diagnostics: A systematic review of classification, segmentation, and predictive modeling techniques," *Expert Syst. Appl.*, vol. 255, Dec. 2024, Art. no. 124665, doi: 10.1016/S11042-019-08394-3.
- [12] R. Javed, T. Abbas, A. H. Khan, A. Daud, A. Bukhari, and R. Alhar-bey, "Deep learning for lungs cancer detection: A review," *Artif. Intell. Rev.*, vol. 57, no. 8, p. 197, Aug. 2024, doi: 10.1007/s10462-024-10807-1.
- [13] L. Wang, "Deep learning techniques to diagnose lung cancer," *Cancers*, vol. 14, no. 22, p. 5569, Nov. 2022, doi: 10.3390/cancers14225569.
- [14] A. Asuntha and A. Srinivasan, "Deep learning for lung cancer detection and classification," *Multimedia Tools Appl.*, vol. 79, no. 11, pp. 7731–7762, Mar. 2020, doi: 10.1007/S11042-019-08394-3.
- [15] A. Halder and D. Dey, "MorphAttnNet: An attention-based morphology framework for lung cancer subtype classification," *Biomed. Signal Process. Control*, vol. 86, Sep. 2023, Art. no. 105149, doi: 10.1016/j.bspc.2023.105149.
- [16] M. H. Sabzalian, F. Kharajinezhadian, A. Tajally, R. Reihanisarsari, H. Ali Alkhazaleh, and D. Bokov, "New bidirectional recurrent neural network optimized by improved ebola search optimization algorithm for lung cancer diagnosis," *Biomed. Signal Process. Control*, vol. 84, Jul. 2023, Art. no. 104965, doi: 10.1016/j.bspc.2023.104965.
- [17] L. Ma, H. Wu, and P. Samundeeswari, "GoogLeNet-AL: A fully automated adaptive model for lung cancer detection," *Pattern Recognition*, vol. 155, Nov. 2024, Art. no. 110657, doi: 10.1016/j.patcog.2024.110657.
- [18] N. Gautam, A. Basu, and R. Sarkar, "Lung cancer detection from thoracic CT scans using an ensemble of deep learning models," *Neural Comput. Appl.*, vol. 36, no. 5, pp. 2459–2477, Feb. 2024, doi: 10.1007/s00521-023-09130-7.
- [19] N. A. Wani, R. Kumar, and J. Bedi, "DeepXplainer: An interpretable deep learning based approach for lung cancer detection using explainable artificial intelligence," *Comput. Methods Programs Biomed.*, vol. 243, Jan. 2024, Art. no. 107879, doi: 10.1016/j.cmpb.2023.107879.
- [20] A. Heidari, D. Javaheri, S. Toumaj, N. J. Navimipour, M. Rezaei, and M. Unal, "A new lung cancer detection method based on the chest CT images using federated learning and blockchain systems," *Artif. Intell. Med.*, vol. 141, Jul. 2023, Art. no. 102572, doi: 10.1016/j.artmed.2023.102572.

Copyright & License:

© Authors retain the copyright of this article. This work is published under the Creative Commons Attribution 4.0 International License (CC BY 4.0), permitting unrestricted use, distribution, and reproduction in any medium, provided the original work is properly cited.