

Pharmacognostic Evaluation and Therapeutic Potential of Medicinal Plants: A REVIEW ARTICLE

Mr.Aditya waghmare,Mr,Yash Ahiwale

Organization: Sarsam college of pharmacy,Palshiwadi Morgao,tal Baramati 41302

Guide name: Rushikesh Lohar

Abstract:

Medicinal plants have been widely used in traditional medicine for centuries. Pharmacognosy, the study of natural drugs, focuses on the identification, extraction, and therapeutic potential of bioactive compounds present in plants. This review highlights the pharmacognostic characteristics, phytochemical constituents, and pharmacological activities of selected medicinal plants with potential therapeutic applications. Emphasis is given to the standardization, quality control, and safety profiles of these plants to support their use in modern medicine

This review explores the pharmacognostic evaluation and therapeutic potential of medicinal plants, emphasizing their quality, safety, and efficacy. By examining organoleptic, macroscopic, microscopic, and physicochemical properties, we can standardize and authenticate medicinal plants. The therapeutic potential of these plants is vast, with applications in treating various diseases. This review aims to provide a comprehensive overview of the pharmacognostic characteristics and therapeutic applications of medicinal plants, highlighting their significance in modern medicine..

Keywords: Pharmacognosy, Medicinal plants, Phytochemicals, Therapeutic potential, Herbal drugs, Standardization

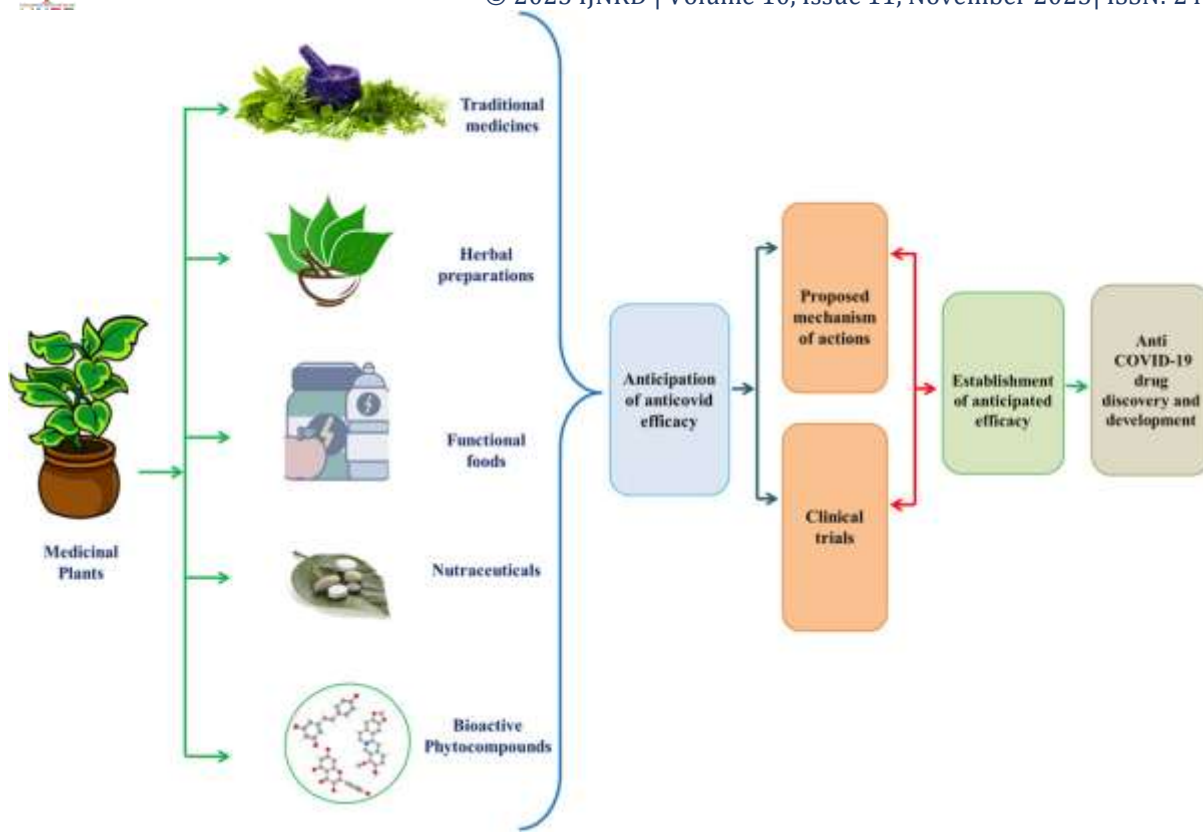
Introduction:

Pharmacognosy is the branch of pharmacy dealing with the study of natural drugs derived from plants, animals, and minerals. Medicinal plants have historically contributed to healthcare by providing bioactive compounds used in drug discovery. The renewed interest in herbal medicines is due to their accessibility,

lower side effects, and the potential for novel therapeutic agents. This review discusses the pharmacognostic properties, chemical constituents, and pharmacological significance of key medicinal plants.

2. Pharmacognostic Evaluation of Medicinal Plants

Pharmacognostic evaluation includes macroscopic, microscopic, and physicochemical analyses of plant materials. This ensures correct identification, purity, and safety.

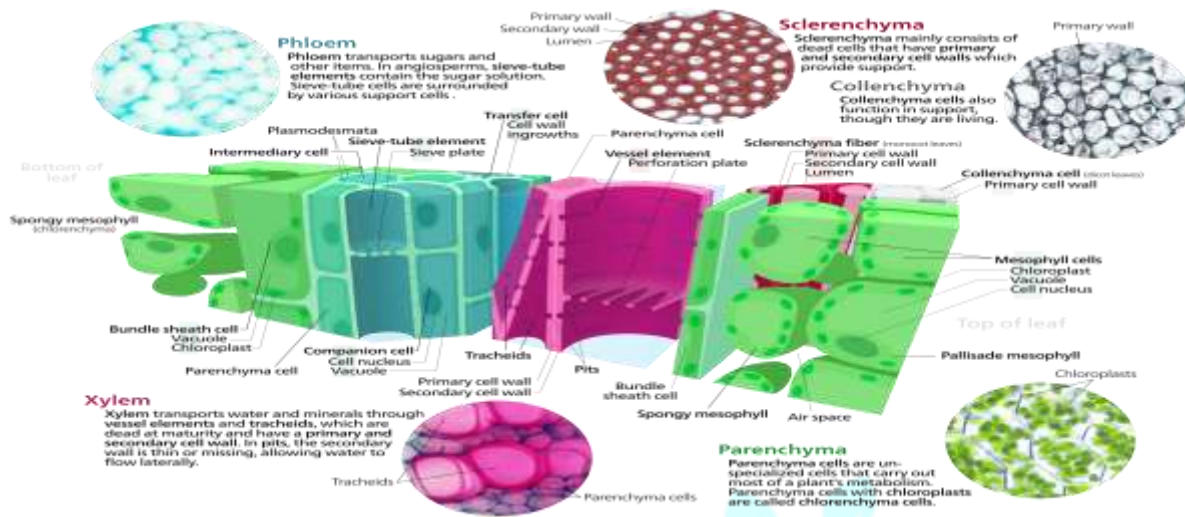


2.1 Macroscopic Evaluation: Examination of leaves, stems, roots, and flowers based on size, shape, color, texture, and odor.

Table 1. Macroscopic and organoleptic features for *Warburgia ugandensis* leaf, stem-bark and powders.

Macroscopic property	Leaf	Leaf powder	Stem-bark	Stem-bark powder
Colour	Dark green when fresh, light to pale green when dry	Shiny to green	Pale green when fresh, cream white to brown when dry	Cream white to light brown
Size	Mature leaf; 110-150 mm length and 20-35 mm width	N/A	2-8mm thick	N/A
Shape	Lanceolate-oblong	N/A	Flat to curled when dry	N/A
Texture	Smooth	Fine	Smooth on small trunks, Slightly rough on older ones	Course
Fracture	Short	N/A	Short	N/A
Brittleness	Brittle when dry, breaking with a cracking sound when dry	N/A	Breaks without deformation with snapping sound when dry	N/A
Odour	Fruity, characteristic	Fruity, characteristic	Strong, fruity	Strong, fruity
Taste	Slightly bitter, peppery	Slightly bitter, peppery	Spicy after taste, peppery	Spicy after taste, peppery
Appearance of cut surface	Rough	N/A	Rough	N/A

2.2 Microscopic Evaluation: Analysis of cellular structures, stomatal patterns, trichomes, and vascular bundles.



3. Physicochemical Parameters: Determination of moisture content, ash values, extractive values, and foreign matter.

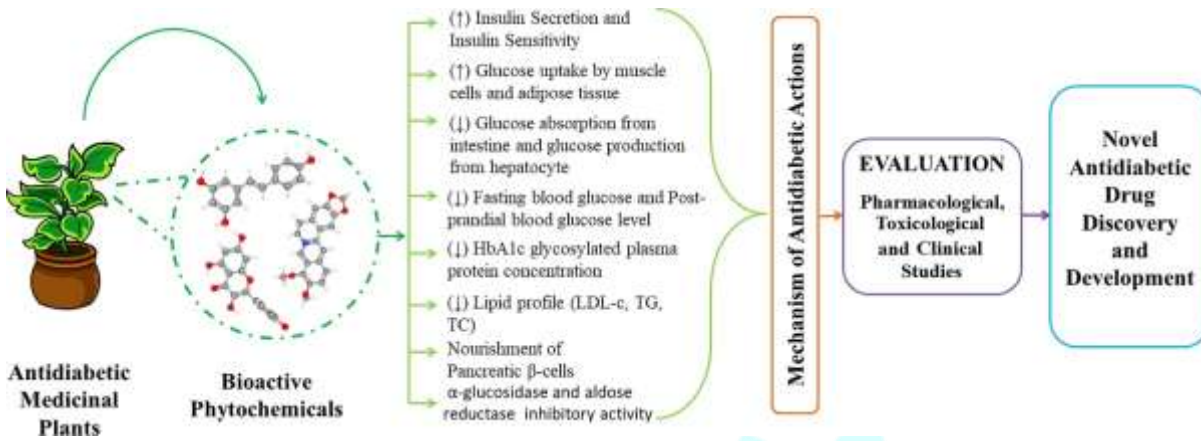
Table 4: Physical Evaluation (% w/w) of *Achyranthes aspera*

Sr. No.	Parameter	Value (%w/w)		
		Leaves	Stem	Root
1.	Moisture content	6.10	6.50	6.30
2.	Extractive values			
	a) Petroleum Ether	5.50	4.50	3.20
	b) Ethanol	7.85	8.50	7.70
	c) Methanol	6.55	6.70	6.20
	d) Water	8.65	9.98	8.85
3.	Ash values			
	a) Total ash	14.50	15.45	15.10
	b) Acid insoluble Ash	9.40	9.20	9.10
	c) Acid soluble Ash	5.10	6.25	6.0

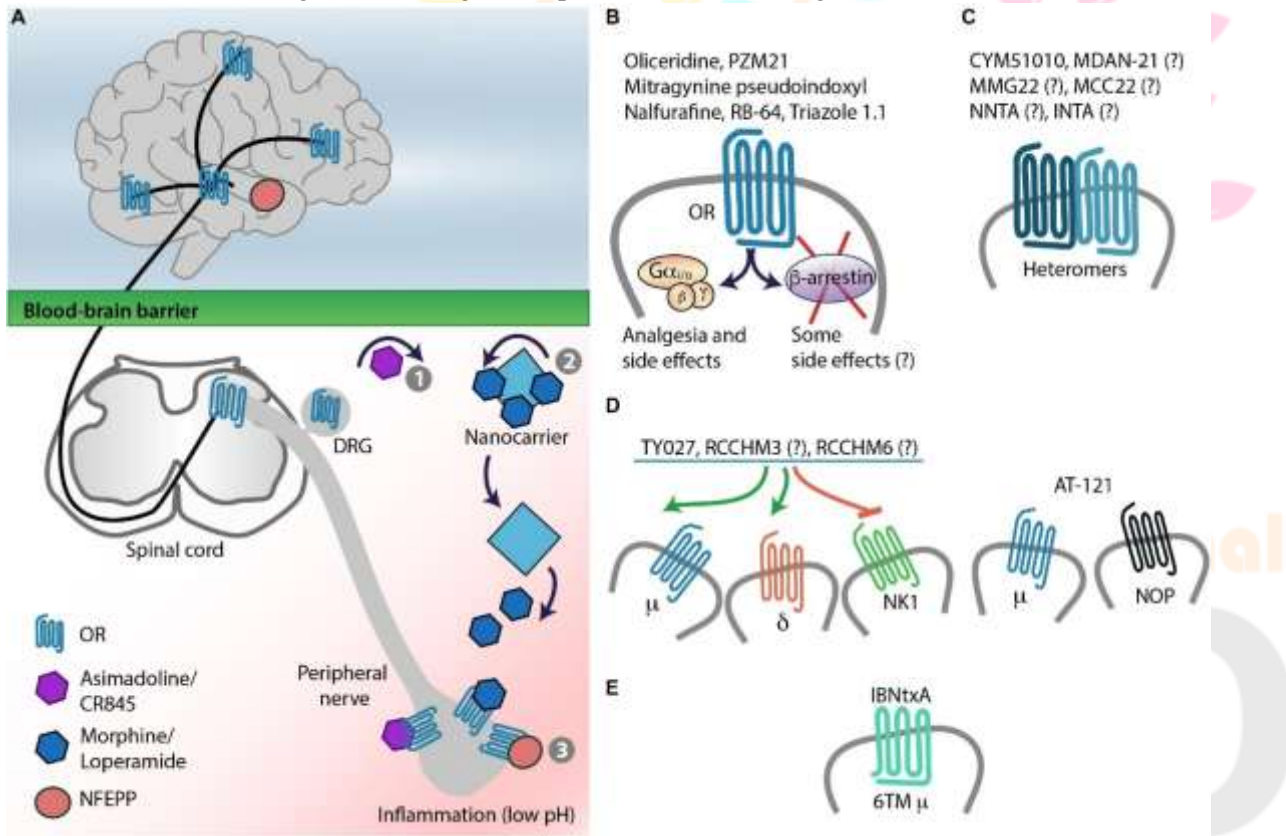
	January	April	July	October	Mean	ST DEV	Observed value (vi)	Standard value (Si)	Unit weight (Wi)	Quality rating (qi)	Wiqi
pH	7.82	7.78	7.62	7.72	7.735	0.086967	7.7	8.5	0.219	49	11
BOD (mg/L)	1.2	1	1	1	1.05	0.1	1.1	5 mg/L	0.3723	21	7.8
COD (mg/L)	6	4	4	6	5	1.154701	5	25 (WPCSR)	0.00468	20	0.1
Total Coliform (MPN/100 ml)	60	60	90	50	65	17.32051	17.32051	50	—	—	—
Temp (°C)	14	19	20	18	17.75	2.629956	18	25	0.00468	71	0.3
DO	8.6	8.6	8.6	9	8.7	0.2	8.7	5 mg/l	0.3723	61	23
Alkalinity/visual Titration CaCO ₃	64	58	72	62	64	5.887841	64	120(WPCSR)	0.000975	53	0.1
Chlorides	8	5	7	5	5.75	0.957427	5.8	250 mg/l	0.0074	2.3	0
Calcium as CaCO ₃	44	36	48	38	41	4.780952	41	75 mg/l	0.025	55	1.4
Magnesium as CaCO ₃	30	32	36	32	32.5	2.516611	2.516611	50	—	—	—
Hardness as CaCO ₃	74	68	82	70	73.5	6.191392	74	200	0.0062	37	0.2
TDS	76	72	105	82	83.75	14.75071	84	500 mg/l	0.0037	17	0.1
							308		1.01624	386	44
										WQI	42.87

3: Phytochemical Constituents of Medicinal Plants

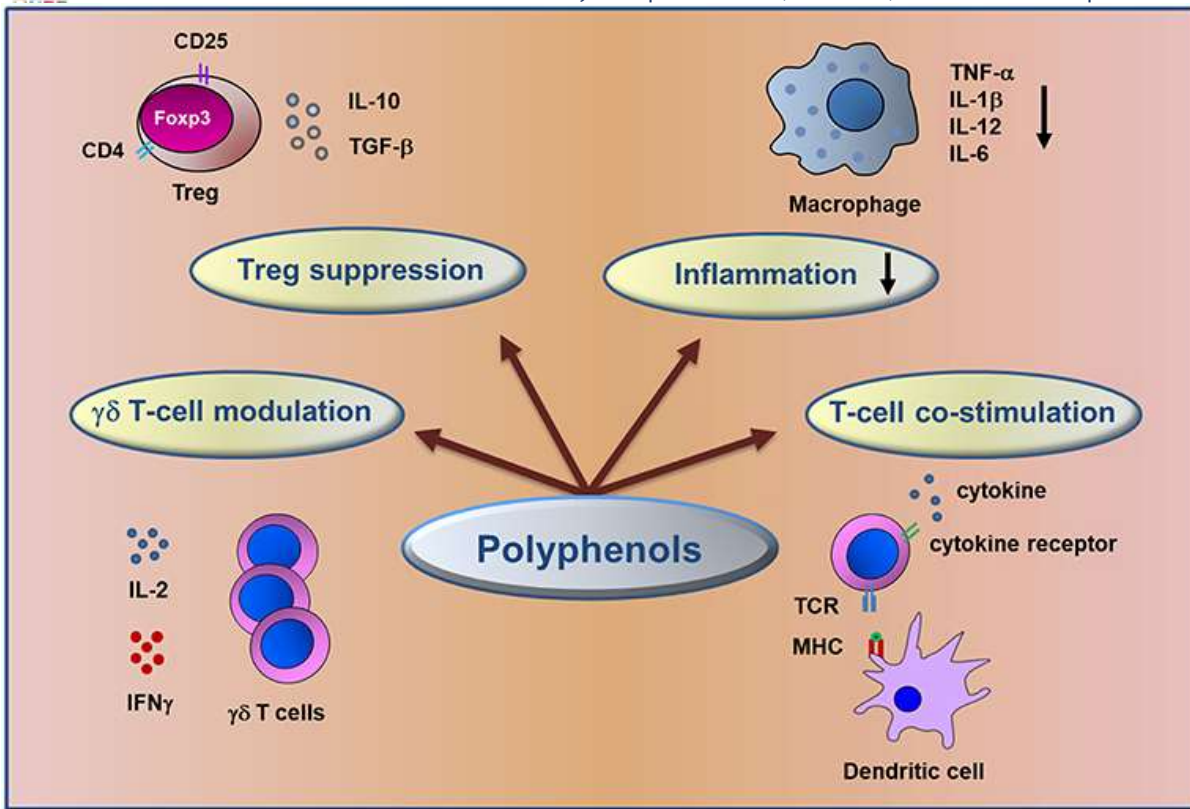
Medicinal plants contain primary and secondary metabolites responsible for therapeutic effects.



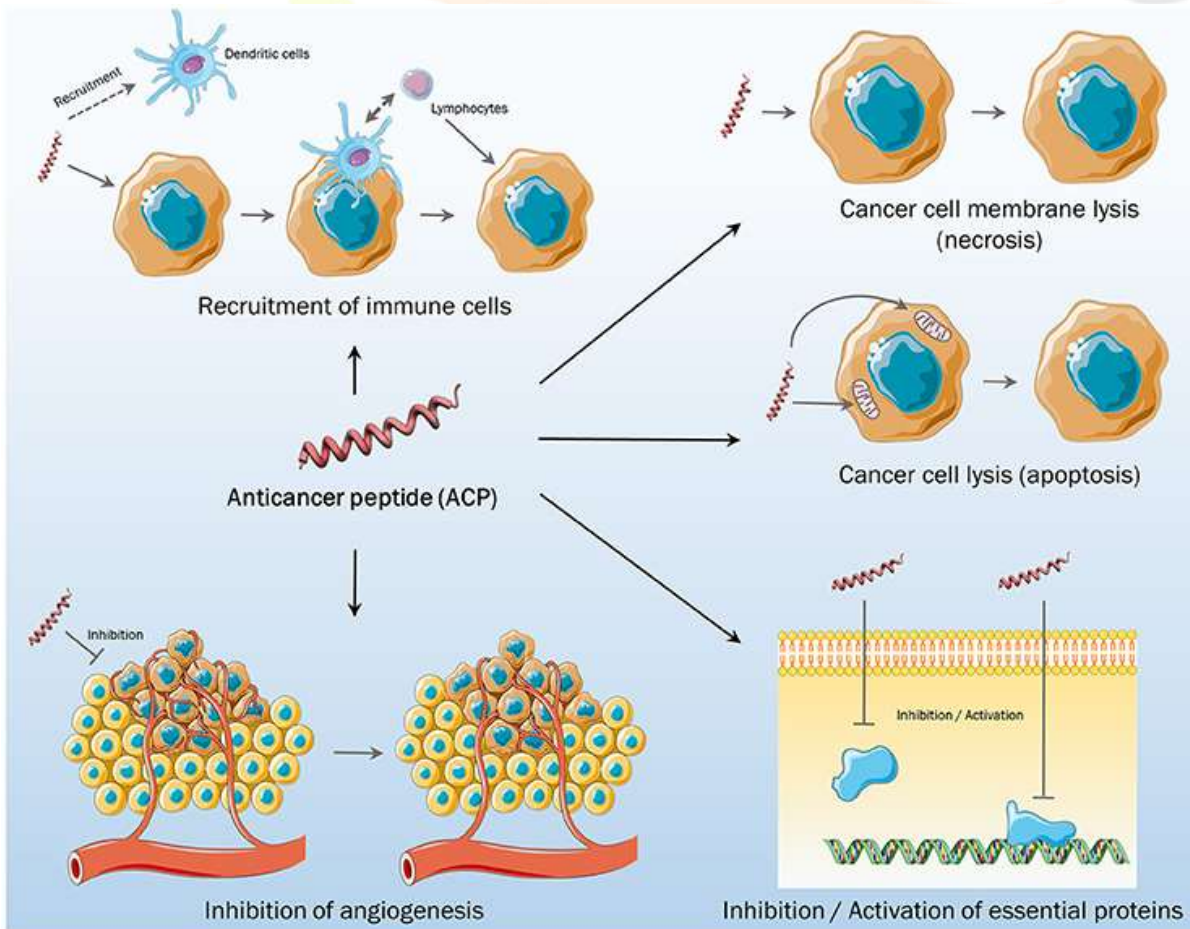
3.1 Alkaloids: Nitrogen-containing compounds with analgesic, anticancer, and antimicrobial activity.



3.2 Flavonoids: Polyphenolic compounds exhibiting antioxidant, anti-inflammatory, and cardioprotective effects.



3.3 Terpenoids and Steroids: Contributing to anti-cancer, hepatoprotective, and antimicrobial properties.



3.4 Glycosides: Used for cardiovascular and anti-diabetic purposes.

What are cardiac glycosides?

Cardiac glycosides are medicines that can help people with certain heart conditions. You take them as either a tablet, liquid or capsule. People usually take it once a day at the same time of day.

How cardiac glycosides work

Cardiac glycosides work by inhibiting (holding back) cell membranes from pumping sodium out. This increases the amount of sodium that stays in your cells. This allows more calcium to build up in the cells. When your cells release the calcium, it creates stronger heart muscle contractions. This leads to a higher stroke volume, meaning your heart pumps more blood with each heartbeat. This can increase the total amount of blood your heart pumps, which is called the cardiac output.

Glycosides are organic compounds found in plants that play crucial roles in medicine, especially for cardiovascular and anti-diabetic purposes. Structurally, a glycoside consists of a sugar portion (glycone) and a non-sugar portion (aglycone), which determines its pharmacological activity.

4.1 *Curcuma longa* (Turmeric): Anti-inflammatory, antioxidant, antimicrobial, and hepatoprotective activities attributed to curcumin.

Curcuma longa (turmeric) is a plant containing curcumin, a compound with significant anti-inflammatory, antioxidant, and antimicrobial properties. Curcumin helps protect the liver from damage (hepatoprotective effects) by reducing oxidative stress and inflammation, and it has also been studied for its benefits in fatty liver disease. The plant's benefits are attributed to curcumin's ability to scavenge free radicals and modulate inflammation, though its poor water solubility and low bioavailability can limit its effectiveness.

Anti-inflammatory and Antioxidant Effects

Reduces Inflammation: Curcumin's anti-inflammatory activity is thought to be linked to its inhibition of certain inflammatory pathways, helping to alleviate symptoms of inflammatory conditions.

Scavenges Free Radicals: It acts as a powerful antioxidant, neutralizing harmful free radicals and reducing oxidative stress, which is implicated in many chronic diseases.

4.2 *Ocimum sanctum* (Tulsi): Immunomodulatory, anti-stress, antimicrobial, and anti-diabetic effects.

Tulsi or Holy Basil which is *Ocimum tenuiflorum* is a plant that is known to many cultures, especially in India, where it has assumed a special position for its medicinal qualities since centuries. Having the "Queen of herbs" title. The name "Tulsi" is derived from Sanskrit, and it means "in comparable one". *Ocimum tenuiflorum* (or *Ocimum sanctum* L.) includes 2 botanically and phytochemically distinct cultivars that include Rama or Sri Tulsi (green leaves) and Krishna or Shyama Tulsi (purplish leaves), while *Ocimum gratissimum* is a third type of Tulsi known as Vana or wild/forest Tulsi (dark green leaves). Despite being distinct species with *Ocimum tenuiflorum* having six times less DNA than *Ocimum gratissimum*. From ancient times, different parts of *O. tenuiflorum* (stems, leaves, flowers, seeds) have been used as medicine for the treatment of several health issues.

4.3 *Withania somnifera* (Ashwagandha): Adaptogenic, anti-inflammatory, anti-cancer, and neuroprotective effects.

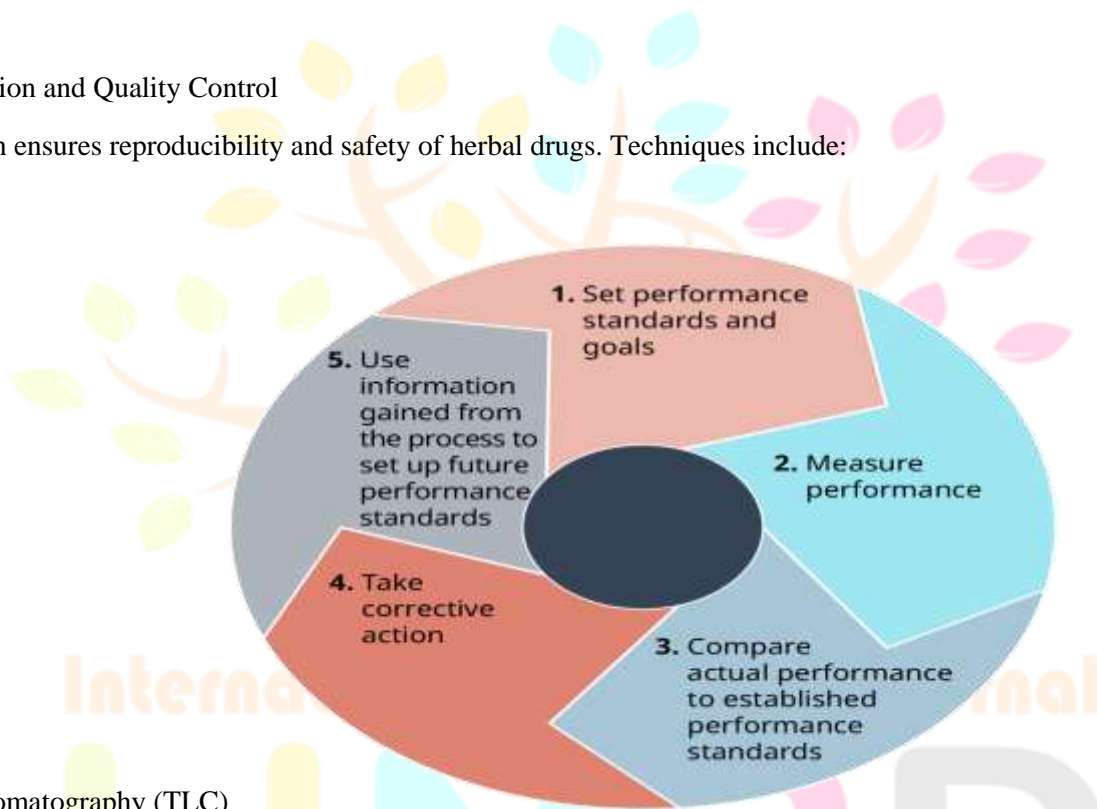
The Ayurvedic herb *Withania somnifera* (Ashwagandha) is widely studied for its pharmacological properties, with research focusing on its adaptogenic, anti-inflammatory, anti-cancer, and neuroprotective effects. These effects are primarily attributed to its bioactive compounds, particularly a class of steroidal lactones called withanolides, withaferin A being one of the most prominent.

4.4 *Azadirachta indica* (Neem): Antimicrobial, anti-diabetic, hepatoprotective, and anti-inflammatory activities.

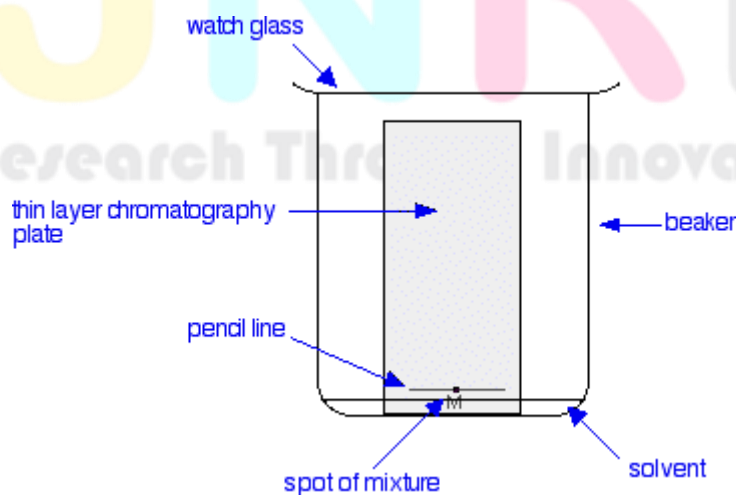
Azadirachta indica (Neem) is a medicinal tree native to the Indian subcontinent that has been used for centuries in Ayurvedic, Unani, and traditional medicine. Its various parts contain a wide range of bioactive compounds, including limonoids, triterpenoids, flavonoids, and polyphenols, that contribute to its diverse pharmacological properties.

5. Standardization and Quality Control

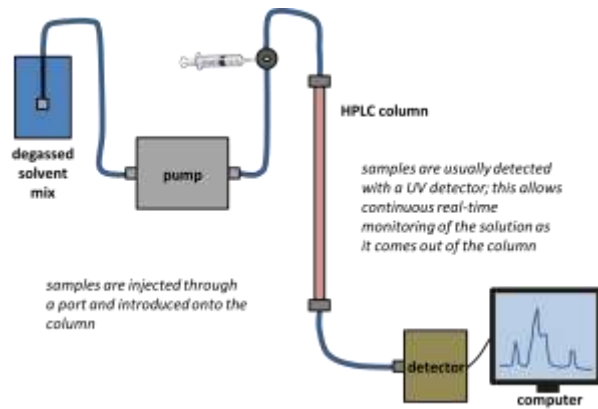
Standardization ensures reproducibility and safety of herbal drugs. Techniques include:



Thin-layer chromatography (TLC)



High-performance liquid chromatography (HPLC)



DNA barcoding for species identification

DNA barcoding identifies species by analyzing short, standardized DNA sequences, typically from the mitochondrial cytochrome c oxidase 1 (COI) gene in animals and specific chloroplast gene regions (like *rbcl* + *matK*) in plants, and then comparing them to a database of known species' DNA sequences.

Microbial and heavy metal testing

Microbial and heavy metal testing involves evaluating samples for the presence of harmful microorganisms and heavy metals using various laboratory methods, including microbiological assays, DNA-based techniques, and spectroscopic methods like Atomic Absorption Spectroscopy (AAS). This testing is crucial for ensuring the safety of products like cosmetics, medicines, and food, as well as assessing environmental contamination in water, soil, and air.

Microbial Testing

Microbial testing aims to detect and quantify microorganisms such as bacteria, fungi, and viruses that may be present in a sample.

Culture-Based Methods: Samples are cultured on selective media (like MacConkey agar for gram-negative bacteria) to grow and differentiate microorganisms.

DNA-Based Techniques: Methods like 16S rRNA gene sequencing and metagenomic analysis can identify and quantify microbial communities and their genetic material.

Microbial Activity Assays: Measures the impact of contaminants on microbial functions such as soil respiration, enzyme activity, and microbial biomass.

Heavy Metal Testing

Heavy metal testing identifies and quantifies heavy metals like lead, mercury, and cadmium.

Spectroscopic Methods:

Atomic Absorption Spectroscopy (AAS): A common technique that measures the absorbance of light by metal atoms, providing information on metal concentration.

Inductively Coupled Plasma Optical Emission Spectrometry (ICP-OES): An advanced technique for analyzing elemental composition with high accuracy.

Sample Preparation: Involves acid digestion of samples, often using concentrated nitric acid, to extract the metals before analysis.

6. Safety and Toxicity Evaluation

Although herbal drugs are considered safe, toxicity studies are essential to determine safe dosage ranges. Acute, sub-acute, and chronic toxicity studies are performed in animal models before human application.

Even though many herbal drugs have a long history of traditional use, their safety cannot be assumed without modern scientific evaluation. Toxicity studies are essential to identify harmful effects, determine safe dosage ranges, and understand the drug's potential risks to human health before clinical trials. Why toxicity studies are needed for herbal drugs "Natural" does not mean "safe": Contrary to popular belief, herbal medicines contain numerous active compounds, some of which can be toxic in high doses or with prolonged use.

7. Conclusion

Medicinal plants are a rich source of therapeutic compounds. Proper pharmacognostic evaluation, phytochemical analysis, and standardization are crucial for their safe and effective use in modern medicine. Further research is needed to validate their clinical efficacy and develop novel plant-based drugs.

References:

1. Kokate CK, Purohit AP, Gokhale SB. Pharmacognosy. 53rd Edition. Nirali Prakashan, 2020.
2. Trease GE, Evans WC. Pharmacognosy. 16th Edition. Elsevier, 2019.
3. Aggarwal BB, Harikumar KB. Potential therapeutic effects of curcumin, *Cancer Lett.* 2009;285: 1–15.
4. Singh N, Bhalla M, de Jager P, Gilca M. An overview on ashwagandha: a Rasayana (rejuvenator) of Ayurveda, *Afr J Tradit Complement Altern Med.* 2011;8: 208–213.
5. Pullaiah T. Handbook of Medicinal Plants. 2nd Edition. CRC Press, 2017.

